



Australian Government
Department of Defence

Objective ID: D16403002

M. Jean-Michel Billig
Executive Vice President AFS Program
40-42, rue du Docteur Finlay
75732 PARIS Cedex 15
FRANCE

Dear M. Billig *Jean-Michel*

NAVAL GROUP DESIGN OF THE FUTURE SUBMARINE CONSTRUCTION YARD

Reference:

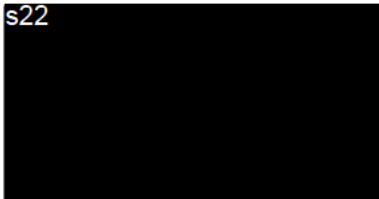
A. Naval Group letter (AFSP-COR-2017-704841) of 11 September 2017

The purpose of this letter is to confirm that the assumptions stated in reference A remain valid as design of the Future Submarine construction yard proceeds, namely:

- Collins class full cycle dockings (FCDs) must not be impacted until the completion of the FCD in 2024, and
- the land currently occupied by ASC Submarines would be made available to Naval Group following this FCD to allow for further development of the submarine construction yard inclusive of access to Port Adelaide River.

Yours sincerely

s22



G.J. SAMMUT, AM, CSC
Rear Admiral, Royal Australian Navy
Head Future Submarine Program
Capability Acquisition and Sustainment Group

R2-1-A017, Russell Offices
Department of Defence
PO Box 7904
CANBERRA ACT 2610

Tel: (02) 6265 2251
Email: gregory.sammuto@defence.gov.au

29 September 2017

AUSTRALIAN FUTURE SUBMARINE PROGRAM

Submarine Construction Yard Infrastructure Functional Requirements Appendix E – Site Layouts

This document contains only Foreground IP



Prepared for:
Future Submarine Project Office
Australian Department of Defence

Prepared by:
Naval Group
40-42 Rue du Docteur Finlay
75015 Paris, FRANCE

List of Documents

List of documents

FSI-DRW-00001-G-Update-SUBMARINE CONSTRUCTION YARD LAYOUT

FSI-DRW-00034-D-Update- Site Roads Layout

[illegible]

<i>DRAWN BY :</i> PAUGAM.T	<i>TECHNICAL CHECKING :</i> JOUBAUD.F	<i>TECHNICAL CHECKING :</i> LE COZ.P	<i>APPROVED BY :</i> RYEMBAULT.A
Design Engineer	Infrastructure Architect	Infrastructure Engineer	Definition Lead Manager
19/07/2019	19/07/2019	19/07/2019	19/07/2019

FUTURE SUBMARINE PROGRAM



~~UNCLASSIFIED~~

Copyright ©2018-2019 All rights reserved. This document contains intellectual property rights owned by or licensed to the Commonwealth and/or Naval Group and/or Naval Group' suppliers. Use and disclosure of this document and its content is governed in accordance with the Submarine Design Contract Core Work Scope 1 between the Commonwealth and Naval Group (Contract No. CASG/SD/Con9044/2)

SUBMARINE CONSTRUCTION YARD	REF ARIANE	REFERENCE	DATE	REV.	SIZE	PAGE
COVER PAGE	DOC-2019-700986	FSI-DRW-00001	19/07/2019	G	A1	1 / 2



LEGEND

	EXIST NG BUILD NG
	NEW CONSTRUCTION
	UPGRADED BUILD NG
	OTHER EXISTING BUILDING
	EXTERNAL LAYOUT AREA
	FENCE
	STORMWATER DRAINAGE
	ROAD
	HEAVY ROAD
	TRANSFER AREA
	SERVICE PLANT AREA
	POTENTIAL BUILDING LOCATION

ID	DESCRIPTION	FOOTPRINT AREA
001	MAIN HALL	16640 m ²
002	HULL WORKSHOP	9400 m ²
003	PRESSURE HULL WORKSHOP	8530 m ²
004	HULL SUPPORT WORKSHOP	4150 m ²
005	MAIN HALL SUPPORT WORKSHOP	2840 m ²
006	MAIN HALL SUPPORT WORKSHOP	3210 m ²
007	MAINTENANCE WORKSHOP	2970 m ²
008	PAINTING WORKSHOP	3400 m ²
009	HAZARDOUS PRODUCT STORAGE	780 m ²
010	WAREHOUSE	9860 m ²
011	PIPING WORKSHOP	4950 m ²
013	PLATFORM LAND BASED TEST FACILITY (PLBTF)	7080 m ²
014-030	SITE UTILITIES	1600 m ²
015	MAIN SITE ACCESS	420 m ²
016	CHANGE ROOMS	2400 m ²
017	COMBAT SYSTEM PHYSICAL INTEGRATION & TEST FACILITY (CSPITF)	6260 m ²
018	SHIPYARD MANAGEMENT BUILDING	2950 m ²
019	CANTEEN	1030 m ²
020	ALBTF	5400 m ²
021	WAREHOUSE	4710 m ²
022	WHARF SUPPORT BUILDING	1680 m ²
023	O&T - Central North	330 m ²
023	O&T - North	1560 m ²
024	O&T - Central South	330 m ²
024	O&T - South	1040 m ²
025	WELDING TRAINING CENTRE	880 m ²
026	COVERED STORAGE AREA	5750 m ²
027	RAFT WORKSHOP	8290 m ²
029	DELIVERY ACCESS BUILDING	60 m ²
031	SECURITY CHECK-POINT	100 m ²
037	ELECTRICAL WORKSHOP	370 m ²
301	CAR PARK A	20690 m ²
302	DELIVERY SECURITY CONTROL AREA	2290 m ²
303	VISITORS CAR PARK	1990 m ²
304	FIRE	750 m ²
304	GAS	300 m ²
305	WAREHOUSE DELIVERY AREA	6840 m ²
306	CSPITF EXTERNAL AREA	4820 m ²
307	PLBTF EXTERNAL AREA	6480 m ²
308	EXTERNAL STORAGE AREAS	1500 m ²
309	EXTERNAL STORAGE AREAS	9000 m ²
310	MAIN LAYDOWN AREA	12090 m ²
311	EXTERNAL STORAGE AREAS	4140 m ²
312	EXTERNAL STORAGE AREAS	1290 m ²
313	EXTERNAL STORAGE AREAS	1580 m ²
314	TRANSFER AREA	39530 m ²
315	SCRAPPYARD	5950 m ²
316	HARDSTAND	5200 m ²
317	EXTERNAL STORAGE AREAS	240 m ²
318	WHARF	3200 m ²
319	NEW CARPARK	51300 m ²
320	SERVICES PLANT AREA	5690 m ²
321	EXTERNAL STORAGE AREAS	640 m ²
322	EXTERNAL STORAGE AREAS	360 m ²
323	EXTERNAL STORAGE AREAS	360 m ²
324	NEW CARPARK	14320 m ²
400	STORMWATER DRAINAGE AREAS	1070 m ²
401	STORMWATER DRAINAGE AREAS	1200 m ²
403	STORMWATER DRAINAGE AREAS	2300 m ²
501	CUF SHIPLIFT	7200 m ²



UNCLASSIFIED


Copyright ©2018-2019 All rights reserved. This document contains intellectual property rights owned by or licensed to the Commonwealth of Australia and/or Naval Group. Use and disclosure of this document and its content is governed in accordance with the Submarine Design Contract Core Work Scope 1 between the Commonwealth and Naval Group (Contract No. CASG/SG/Cor95 - 2)

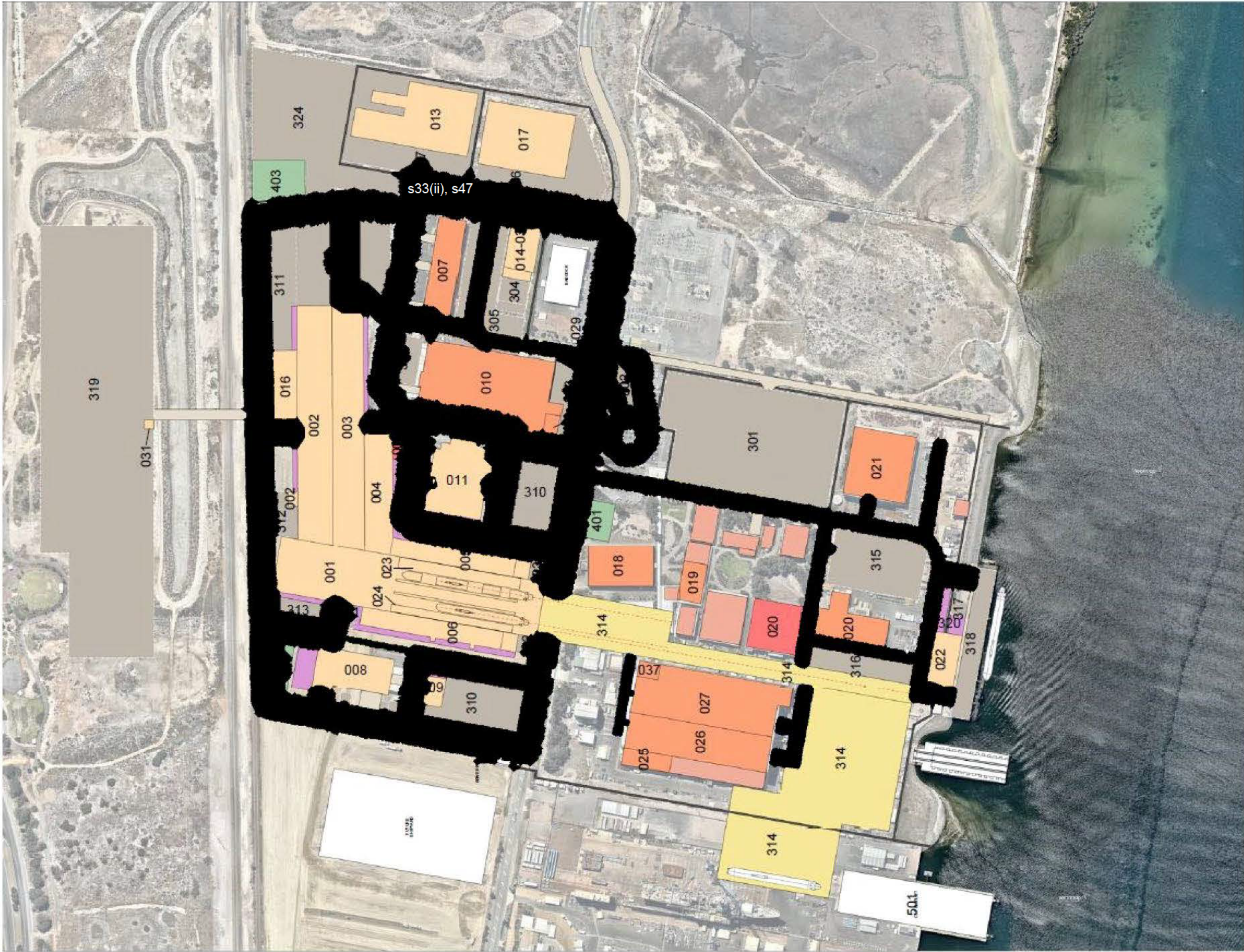
FUTURE SUBMARINE PROGRAM

Echelle (Scale)	Format (Size)	SUBMARINE CONSTRUCTION YARD			
1 : 2000	A1	OVERALL SITE LAYOUT PLAN			
REF ARIANE	REFERENCE	DATE	REV.	PAGE	AVANT UTILISER D'UNE VERSION PAPIER, S'ASSURER DE SON ETAT DE VALIDITE. BEFORE USING A PAPER VERSION, BE SURE OF THE STATE OF VALIDITY.
DOC-2019-700986	FSI-DRAW-00001	19/07/2019	G	2 / 2	

[illegible]

<i>DRAWN BY :</i> PAUGAM.T	<i>TECHNICAL CHECKING :</i> JOUBAUD.F	<i>TECHNICAL CHECKING :</i> LE COZ.P	<i>APPROVED BY :</i> RYEMBAULT.A
Design Engineer	Infrastructure Architect	Infrastructure Engineer	Definition Lead Manager
19/07/2019	19/07/2019	19/07/2019	19/07/2019

<h1 style="text-align: center;">FUTURE SUBMARINE PROGRAM</h1>						
 <div style="border: 1px solid red; padding: 2px; display: inline-block; color: red; font-weight: bold;">UNCLASSIFIED</div>		<p>Copyright ©2018-2019 All rights reserved. This document contains intellectual property rights owned by or licensed to the Commonwealth and/or Naval Group and/or Naval Group' suppliers. Use and disclosure of this document and its content is governed in accordance with the Submarine Design Contract Core Work Scope 1 between the Commonwealth and Naval Group (Contract No. CASG/SD/Con9044/2)</p>				
SITE ROADS	REF ARIANE	REFERENCE	DATE	REV.	SIZE	PAGE
COVER PAGE	DOC-2019-700987	FSI-DRW-00034	19/07/2019	D	A1	1 / 2





LEGEND

s33(ii), s47

All roads inside the SCY are compliant with forklift traffic



  <small>Copyright ©2018-2019 All rights reserved. This document contains intellectual property rights owned by or licensed to the Commonwealth and/or Naval Group and/or Naval Group's suppliers. Use and disclosure of this document and its content is governed in accordance with the Submarine Design Contract Core Work Scope 1 between the Commonwealth and Naval Group (Contract No. CASG/6D/Cor95 /2)</small>		FUTURE SUBMARINE PROGRAM				
		Echelle (Scale) 1 : 2000	Format (Size) A1	SITE ROADS OVERALL SITE LAYOUT PLAN		
REF ARIANE	REFERENCE	DATE	REV.	PAGE	<small>AVANT UTILISER D'UNE VERSION PAPIER S'ASSURER DE SON ETAT DE VALIDITE</small> <small>BEFORE USING A PAPER VERSION, BE SURE OF THE STATE OF VALIDITY</small>	
DOC-2019-700987	FSI-DRAW-00034	19/07/2019	D	2/ 2		