



2025 Ongoing Monitoring Report HMAS Albatross

KEY POINTS

- ▶ **Defence undertakes monitoring on and around HMAS Albatross to understand per- and polyfluoroalkyl substances (PFAS) movement and concentrations in groundwater and surface water.**
- ▶ **Monitoring results inform PFAS management and remediation activities.**
- ▶ **Defence started ongoing monitoring in 2021.**
- ▶ **Ongoing Monitoring Reports are available on the Defence website.**

What is an Ongoing Monitoring Report?

An Ongoing Monitoring Report collates and interprets PFAS sampling results collected as part of the Ongoing Monitoring Plan. The Ongoing Monitoring Plan outlines what Defence is sampling (e.g. water and sediment), where the sampling will take place, and how often. This ensures Defence maintains an up-to-date understanding of risk that the community may be exposed to from PFAS coming from the base. This understanding helps us work out the best way to minimise that risk.

Background

The 2025 Ongoing Monitoring Report covers groundwater and surface water sampling undertaken between December 2024 to November 2025, from locations on and around HMAS Albatross. The report also compares the results of recent sampling to historic data.

What does the Ongoing Monitoring Report tell us?

- The levels of PFAS in groundwater and surface water are similar to previous results.
- Additional investigation of the on-base sewer network identified another potential source of PFAS, and is subject to ongoing investigations.
- There is no change to the potential exposure risks to people and the environment on and around HMAS Albatross.


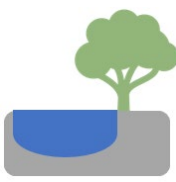
Precautionary advice

The New South Wales Environment Protection Authority issued precautionary dietary advice for people who regularly eat fish from the Shoalhaven River and Currumbene Creek. For more information please refer to the following websites:

Shoalhaven River: www.epa.nsw.gov.au/your-environment/contaminated-land/pfas-investigation-program/pfas-investigation-sites/shoalhaven-river

Currumbene Creek: www.epa.nsw.gov.au/your-environment/contaminated-land/pfas-investigation-program/pfas-investigation-sites/currumbene-creek

Number of samples collected and analysed

Groundwater	Surface water
	
Groundwater is water beneath the earth's surface. It often supplies bores, wells or springs.	Surface water is water that collects on the ground and can be in the form of creeks, rivers, lakes, wetlands, oceans and more.
2025 Monitoring Period	
28 samples from 32 locations.	37 samples from 21 locations.

Next steps

Over the next 12 months Defence will:

- continue monitoring to further understand any changes in PFAS concentrations;
- continue to keep the community informed about the management and ongoing monitoring of PFAS on and around HMAS Albatross.

Further information

A full copy of the Ongoing Monitoring Report is available on the Defence website at: <https://www.defence.gov.au/about/locations-property/pfas/pfas-management-sites/hmas-albatross>

Contact us



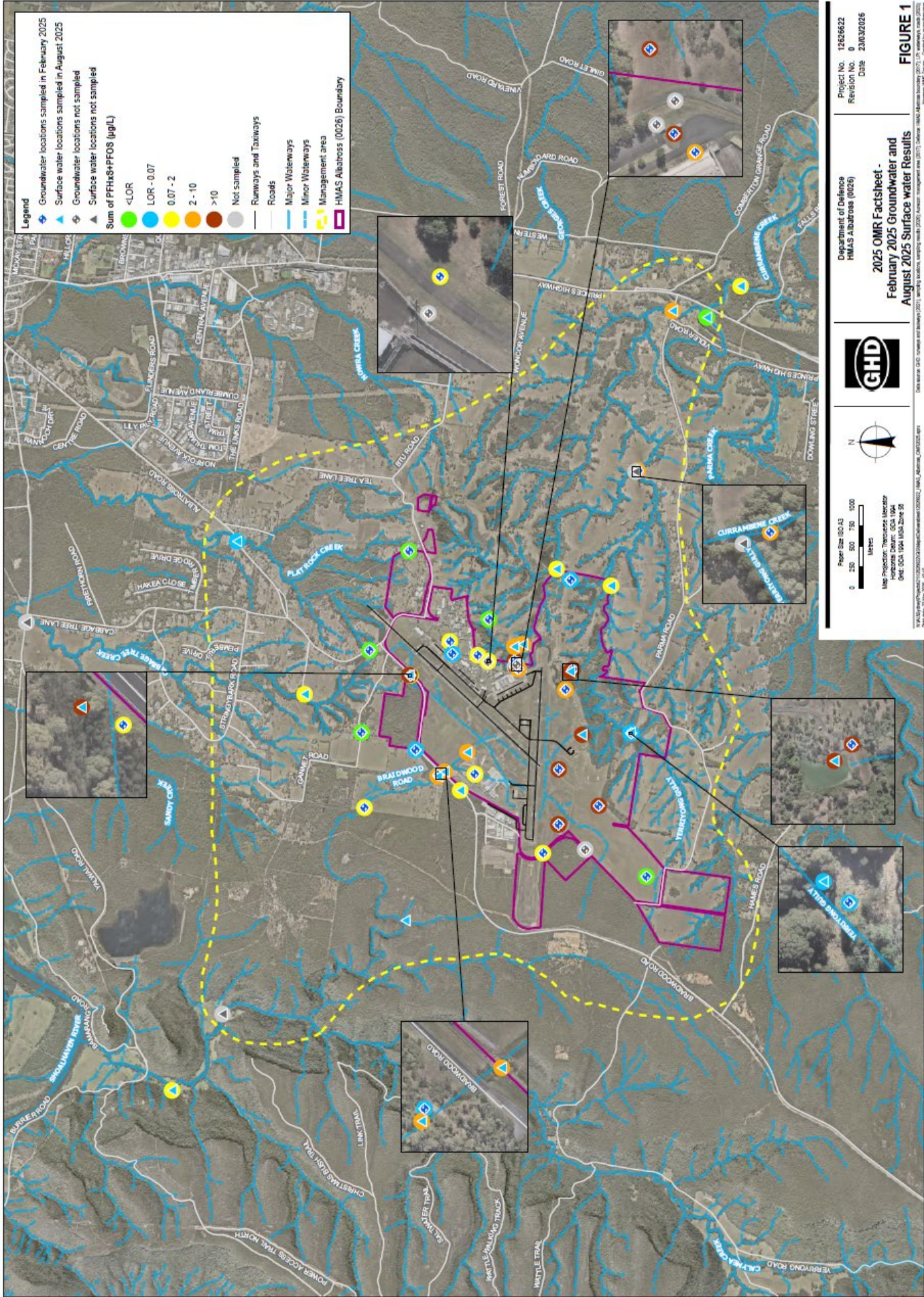
[1800 333 362](tel:1800333362)



pfas.enquiry@defence.gov.au

Scan the QR code to find out more about Defence's PFAS Investigation and Management Program.





HMAS Albatross sampling results