



## October 2024 – June 2025 Ongoing Monitoring Report RAAF Base Townsville

### KEY POINTS

- Defence undertakes monitoring on and around RAAF Base Townsville to understand per- and polyfluoroalkyl substances (PFAS) movement and concentrations in groundwater, surface water, and sediment.
- Monitoring results inform PFAS management and remediation activities.
- Defence started ongoing monitoring in April 2020.
- The Ongoing Monitoring Report is available on the Defence website.
- PFAS risks to people or the environment remain stable since the initial detailed investigations were completed in April 2020.

### What is an Ongoing Monitoring Report?

An Ongoing Monitoring Report collates and interprets PFAS sampling results from the Ongoing Monitoring Plan.

The Ongoing Monitoring Plan outlines what Defence is sampling (e.g. groundwater, surface water, sediment), where the sampling will take place, and how often.

This ensures Defence maintains an up-to-date understanding of any risk that the community may be exposed to from PFAS coming from the base. This understanding helps us work out the best way to minimise that risk.

### Precautionary advice

There is no precautionary advice for PFAS exposure in the off-base area of this Defence base.

### Background

The Ongoing Monitoring Report covers groundwater, surface water, and sediment sampling between October 2024 and June 2025 from locations on and around RAAF Base Townsville. The report compares results of the new sampling data to past data collected since April 2020.




### What does the Ongoing Monitoring Report tell us?

Based on the samples collected during the monitoring period:

- PFAS concentrations in groundwater, surface water, and sediment remained relatively consistent with previous monitoring periods.
- No significant changes were identified in the nature or extent of PFAS contamination in off-base areas compared to earlier investigations.
- The data confirmed potential risks to human health and the environment remain as previously assessed, with no new or increased risks requiring further action.

Defence will continue monitoring groundwater, surface water, and sediment to identify PFAS trends, inform management actions and understand community and environment impacts. For more information, see the Human Health and Ecological Risk Assessment on the Defence website.

### Number of samples collected and analysed

Groundwater	Surface water	Sediment
		
Groundwater is water beneath the earth's surface. It often supplies bores, wells or springs.	Surface water is water that collects on the ground and can be in the form of creeks, rivers, lakes, wetlands, oceans and more.	Sediment is made of remains of rocks, minerals, plants, and animals moved and deposited to a new location.
<b>145 samples collected from 79 groundwater monitoring locations.</b>	<b>74 samples collected from 45 surface water monitoring locations.</b>	<b>80 samples collected from 45 sediment monitoring locations.</b>

### Next steps

Over the next 12 months Defence will continue:

- Seasonal monitoring to further understand any changes in PFAS concentrations, with the next sampling scheduled for April 2025.
- Keeping the community informed about the management and ongoing monitoring of PFAS on and around RAAF Base Townsville.

### Further information

A full copy of the Ongoing Monitoring Report is available on the Defence website at: <https://www.defence.gov.au/about/locations-property/pfas/pfas-management-sites/raaf-base-townsville>

### Contact us



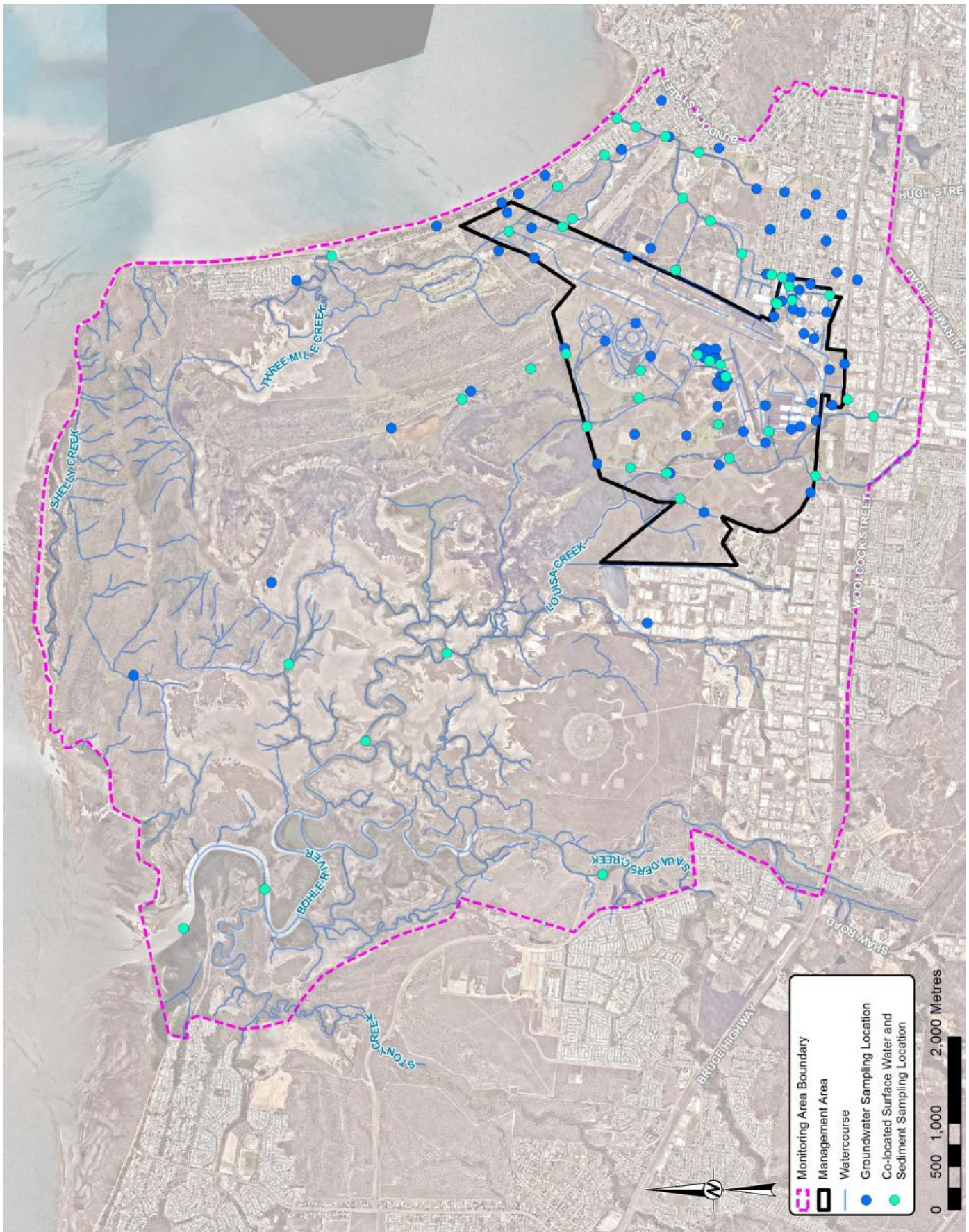
1800 333 362



[pfas.enquiry@defence.gov.au](mailto:pfas.enquiry@defence.gov.au)

Scan the QR code to find out more about Defence's PFAS Investigation and Management Program.





**RAAF Base Townsville monitoring locations**