



## Jervis Bay Range Facility and HMAS Creswell

Ongoing Monitoring Report October 2021 – December 2023

Defence monitors on and around Jervis Bay Range Facility and HMAS Creswell to understand per- and poly-fluoroalkyl substances (PFAS) movement and concentrations in the environment. The monitoring results inform PFAS management and remediation activities. Defence started ongoing monitoring on and around Jervis Bay Range Facility and HMAS Creswell in 2021.

### What is an Ongoing Monitoring Report?

An Ongoing Monitoring Report collates and interprets PFAS sampling results from the ongoing monitoring events. The report also compares the results of the new sampling to previous results.

### Ongoing Monitoring Report October 2021 – December 2023

This report covers groundwater, surface water, sediment, and tank water sampling conducted between October 2021 and December 2023, from locations on and around Jervis Bay Range Facility and HMAS Creswell.



Interim water treatment plant at Jervis Bay Range Facility

### What does the Ongoing Monitoring Report tell us?

- The findings from the sampling results do not suggest a change in any potential exposure risks for the community.
- The levels of PFAS contamination in surface water, sediment and tank water were consistent with previous results. Where minor increases were observed they were within an expected range of variability.
- Increased PFAS concentrations in groundwater were observed at locations on Defence property near known source areas.
- One off-site groundwater monitoring location within the Wreck Bay community lands southeast of the Jervis Bay Range Facility observed increased PFAS concentrations. The changes in groundwater are likely associated with above average rainfall mobilising PFAS from soil and sediment. Defence will continue to monitor these locations to assess the changes in PFAS concentrations observed.
- PFAS were detected in low concentrations within groundwater near Lake Windermere and Lake McKenzie, with concentrations from all samples collected in the Lakes remaining below human health guidance values. Prolonged wet weather has caused the groundwater table to rise and groundwater movement is occurring. Previous investigations have found that deeper groundwater is not connected to the Lakes in the area. Defence will continue to monitor the Lakes to assess the changes in PFAS concentrations observed.



## Precautionary advice

The Department of Infrastructure, Transport, Regional Development, Communications and the Arts (DITRDCA) has issued precautionary advice for users of waterways in the Jervis Bay Territory. The precautionary advice is that Mary Creek is closed for all use and that the collection and eating of seafood from Summercloud Creek, Flat Rock Creek and Captains Lagoon should be avoided. DITRDCA routinely test the Jervis Bay drinking water supply for PFAS and publish the results in community bulletins. For more information on precautionary advice, please refer to the DITRDCA website:

[Precautionary signage regarding PFAS | DITRDCA](#)

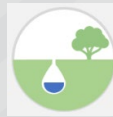
To view the PFAS results from the DITRDCA water supply testing, please refer to the DITRDCA website: [Jervis Bay community bulletins | Department of Infrastructure, Transport, Regional Development, Communications and the Arts.](#)

## Next steps and keeping you informed

Defence will continue to manage, remediate and monitor PFAS contamination on and around Jervis Bay Range Facility and HMAS Creswell. Continual monitoring will tell Defence if there are more risks that we need to manage. Remedial works commenced in early 2025, targeting PFAS source areas on Jervis Bay Range Facility within the Mary Creek catchment. The temporary water treatment plant will continue to operate, and a larger water treatment plant is scheduled to start construction in 2025. This Ongoing Monitoring Report and all other reports and factsheets prepared for Jervis Bay Range Facility and HMAS Creswell are available on the Defence website.

## Number of samples collected and analysed (October 2021 – December 2023)

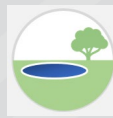
### GROUNDWATER



Groundwater is water beneath the earth's surface. It often supplies bores, wells or springs.

249 samples collected from 53 groundwater monitoring wells.

### SURFACE WATER



Surface water is water that collects on the ground and can be in the form of creeks, rivers, lakes, wetlands, oceans and more.

298 samples collected from 74 surface water locations.

### SEDIMENT



Sediment is made of broken down remains of rocks, minerals, plants, and animals that is moved and deposited to a new location.

259 samples collected from 63 sediment locations.

### TANK WATER



Tank water is water located on Jervis Bay Range Facility associated with sumps and water holding tanks.

30 samples collected from 6 tank locations.



**AECOM**

0 300 600 m

Legend

- Defence Site Boundary
- Monitoring Area
- Management Area
- Areas of Environmental Concern
- Waterbody/Watercourse

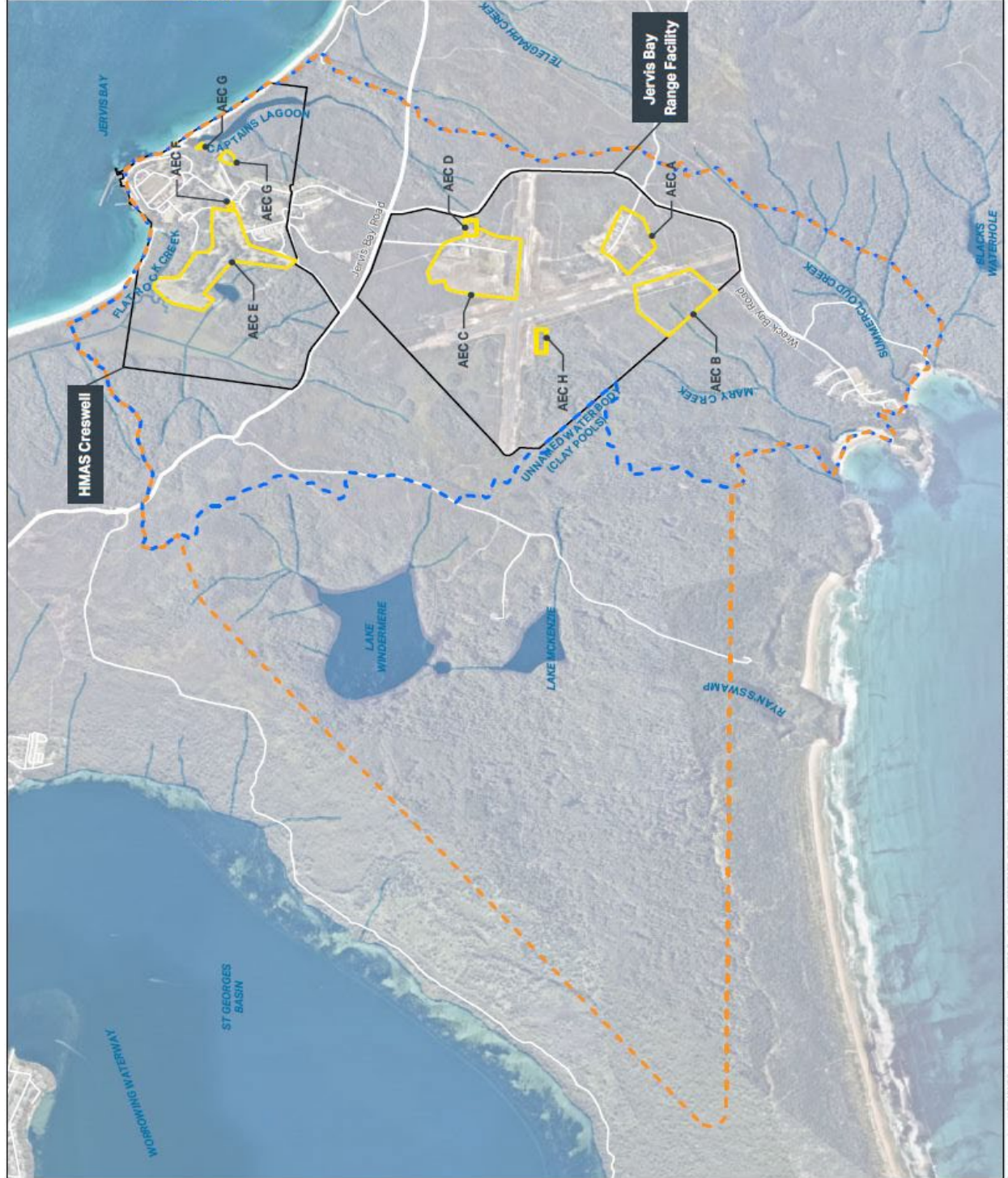


FIGURE F2:  
SITE LAYOUT

PROJECT NAME:  
PFAS OMP  
REPORT NAME:  
Ongoing Monitoring Report  
October 2021 to December 2023  
HMAS Creswell (0020) and  
Jervis Bay Range Facility (0021)  
CLIENT NAME:  
Department of Defence  
PROJECT NUMBER:  
60612562

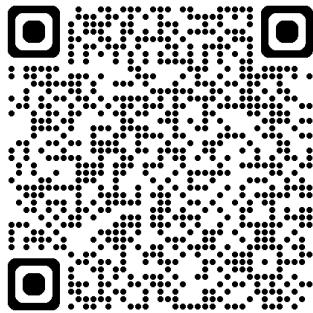
Copyright. Copyright is reserved in relation to the data, maps, images, and other information contained in this report. No part of this report may be reproduced or transmitted in any form or by any means, electronic or mechanical, including photocopying, recording, or by any information storage and retrieval system, without the prior written permission of AECOM. For more information, please contact AECOM at [ecocom@ecocom.com.au](mailto:ecocom@ecocom.com.au) or <http://www.aecocom.com.au>.  
Neither AECOM Australia Pty Ltd (AECOM) nor the Department of Defence, Services Australia make any representation or warranties (express or implied) for the use of the information contained in this report for any purpose other than that for which it was prepared. AECOM has provided the information in this report in accordance with the requirements of the contract for its preparation. AECOM does not accept any liability for any loss or damage, including consequential loss or damage, arising from the use of the information in this report. The information in this report is provided for the use of the client and is not intended to be used for any other purpose.

## Jervis Bay Range Facility and HMAS Creswell Monitoring Area



## Read the full Jervis Bay Range Facility and HMAS Creswell Ongoing Monitoring Report

Scan the QR code below:



Or use the link below to access the Ongoing Monitoring Report:

[www.defence.gov.au/about/locations-property/pfas/pfas-management-sites/jervis-bay-range-facility](http://www.defence.gov.au/about/locations-property/pfas/pfas-management-sites/jervis-bay-range-facility)



## Translating and Interpreting Service (TIS National)

For translation assistance, TIS National provides interpreting services 24 hours a day via telephone from anywhere in Australia for the cost of a local call\*.

For more information contact 131 450 or visit:

[www.tisnational.gov.au](http://www.tisnational.gov.au)

*\*Calls from mobile phones may attract a higher rate.*



## Looking for more information?

Scan the QR code below to find out more information about Defence's PFAS Investigation and Management program, or visit the website:

[www.defence.gov.au/about/locations-property/pfas](http://www.defence.gov.au/about/locations-property/pfas)



## Alternatively, you can contact:



**1800 333 362**



**[pfas.enquiry@defence.gov.au](mailto:pfas.enquiry@defence.gov.au)**

## Media enquiries

Media enquiries should be directed to Defence Media via email at [media@defence.gov.au](mailto:media@defence.gov.au)

