



2025 PFAS Management Area Plan

RAAF Base Tindal

KEY POINTS

- Defence has revised the PFAS Management Area Plan (PMAP) updating how Defence will manage PFAS contamination on and from RAAF Base Tindal.
- The PMAP has been reviewed by a technical adviser who as a Northern Territory (NT) accredited site auditor.
- Defence consulted with the NT Environmental Protection Authority (EPA) on the revised PMAP.
- To support the community and reduce their exposure to PFAS, the NT EPA has issued precautionary advice for the township of Katherine. Information about this advice is available here, www.ntepa.nt.gov.au/your-environment/pfas.
- The revised PMAP is available on the Defence website.

What is a PFAS Management Area Plan?

The PFAS Management Area Plan sets out Defence's activities to manage risks from per- and poly- fluoroalkyl substances (PFAS) contamination on and from RAAF Base Tindal.

The revised PMAP contains up-to-date information on how management activities are progressing and adjusts our management approach where required.

Updates are informed by PFAS contamination data collected under the RAAF Base Tindal Ongoing Monitoring Plan.

Contact us



1800 316 813



pfas.tindal@truenorthcomm.com.au

Background

In 2019, Defence completed detailed environmental investigations into PFAS contamination on and around RAAF Base Tindal. Investigations determined that most PFAS are found in areas where firefighting foams were previously used and stored. These are called source areas. PFAS moves from these source areas into surface water and groundwater, and can then move off the base into the wider environment.

These investigations identified two source areas on RAAF Base Tindal, where PFAS concentrations required further study or action. These studies or actions were captured in the 2019 PMAP.

A Human Health Risk Assessment (HHRA) was prepared in 2018 to assess the PFAS exposure risks to the surrounding community. The HHRA findings deemed the exposure risk for most people to be low and acceptable. However, some activities have elevated health risks, such as drinking contaminated bore water, consuming locally grown produce (eggs and meat) irrigated with impacted bore water, consuming fish from Tindal Creek or parts of Katherine River, and handling impacted soils and effluent in and around source areas.

Based on the outcomes of the investigations and risk assessment, Defence identified further studies or actions required to manage the risks from PFAS contamination leaving RAAF Base Tindal. These studies or actions were captured in the 2025 PMAP.

Revised PFAS Management Area Plan

The following actions have been addressed since the 2019 PMAP was issued:

- Installation of two on base groundwater treatment plants to treat and reduce the amount of PFAS contaminated groundwater leaving the base.
- Remediation, treatment and removal of PFAS impacted soils at the fire station area and fire training area, to reduce the amount of PFAS moving off base.
- Installation of a permanent water treatment plant for Katherine township, to secure a long-term drinking water supply for the community.
- Provision of drinking water and rainwater tanks to impacted stakeholders.

The following activities are ongoing or planned:

- Routine sampling of groundwater, surface water and fish at RAAF Base Tindal and the surrounding Katherine and Cossack area.
- Continue to review and revise the Ongoing Monitoring Plan and PMAP so that actions and precautionary advice remain relevant.

Next steps

Over the next 12-18 months Defence will:

- develop and implement a strategy to reduce PFAS leaving the base by upgrading the existing groundwater treatment plants
- explore ways to reduce the release of PFAS from contaminated infrastructure on base, such as the fire station hardstand areas.

For more information

A full copy of the revised PMAP is available on the Defence website at:

www.defence.gov.au/about/locations-property/pfas/pfas-management-sites/raaf-base-tindal

Scan the QR code to find out more about Defence's PFAS Investigation and Management Program.



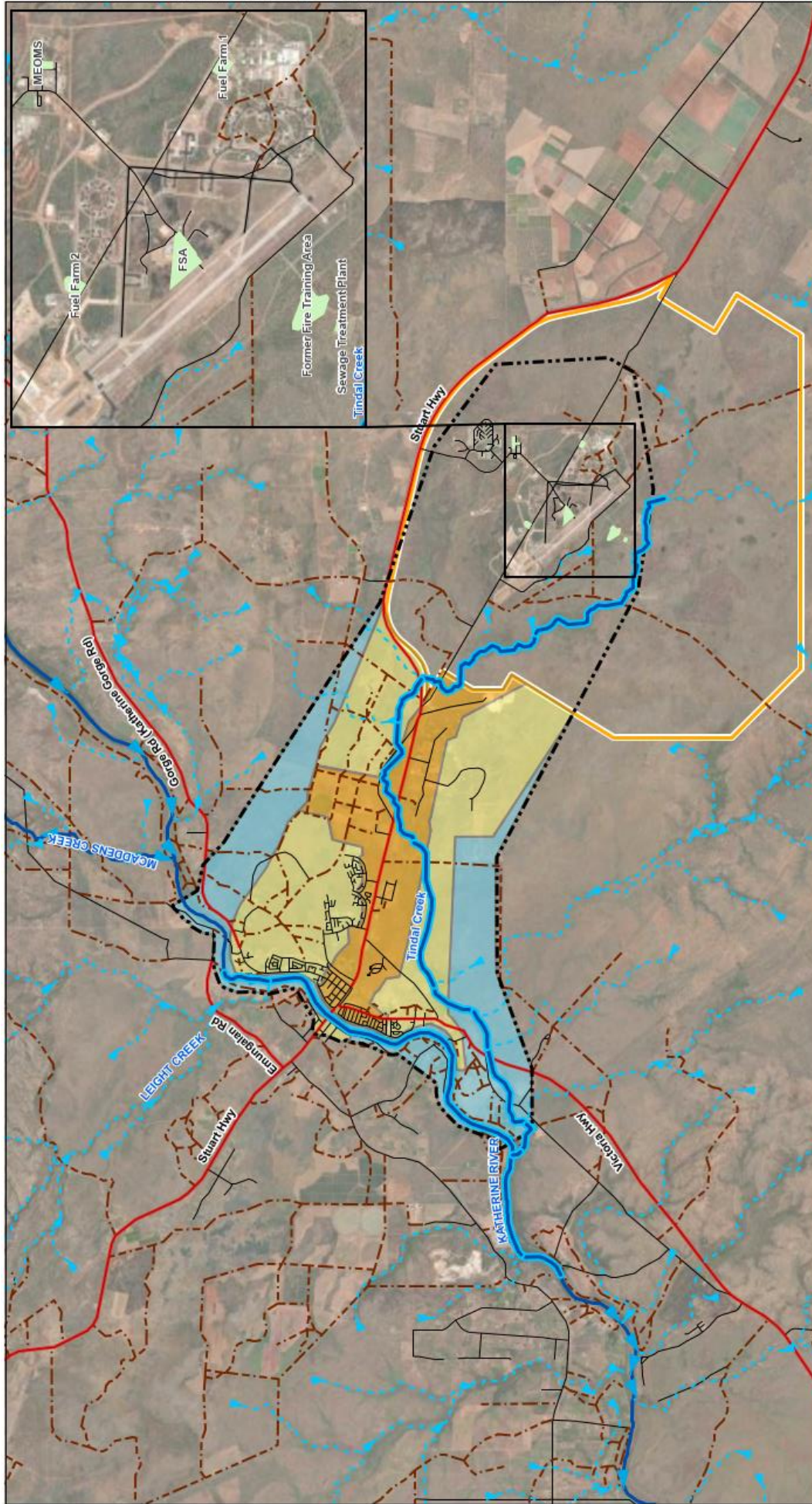


FIGURE F1: PFAS MANAGEMENT AREA

Note:

Zone 4 - Treated Town Water Supply -
Not shown

RAAF Base Tindal Management Area