



## 2025 PFAS Management Area Plan

### RAAF Base Darwin

#### KEY POINTS

- **Defence has revised the PFAS Management Area Plan updating how Defence will manage PFAS contamination on and from RAAF Base Darwin.**
- **The plan has been reviewed by a technical adviser who is a Northern Territory accredited site auditor.**
- **Defence consulted with Northern Territory (NT) EPA on the revised PMAP.**
- **To support community members and reduce their exposure to PFAS, NT Health has issued precautionary advice recommending a limit of the consumption of wild caught fish, shellfish and crustaceans from Ludmilla and Rapid Creeks. This advice is available here: [www.ntepa.nt.gov.au/your-environment/pfas](http://www.ntepa.nt.gov.au/your-environment/pfas)**
- **The revised PFAS Management Area Plan is available on the Defence website.**

#### What is a PFAS Management Area Plan?

The PFAS Management Area Plan (PMAP) sets out Defence's activities to manage the risks from per- and poly- fluoroalkyl substances (PFAS) contamination on and from RAAF Base Darwin.

The revised PMAP contains up-to-date information on how management activities are progressing and adjusts our management approach where required.

Updates are informed by PFAS contamination data collected under the RAAF Base Darwin Ongoing Monitoring Plan (OMP).

#### Background

In 2018, Defence completed detailed environmental investigations into PFAS contamination on and around RAAF Base Darwin. Investigations determined that most PFAS are found in areas where firefighting foams were previously used and stored. These are called source areas. PFAS moves from these source areas into surface water and groundwater, and can then move off the base into the wider environment.

These investigations identified source areas on RAAF Base Darwin, where PFAS concentrations required further study and action. These studies and actions were captured in the 2019 PMAP.

A Human Health Risk Assessment was prepared in 2018 to assess the PFAS exposure risks to the surrounding community. While the PFAS exposure risk to most people was considered low, potential exposure risks were identified for individuals who consume contaminated groundwater, large quantities of locally grown or produced eggs irrigated with groundwater, or significant amounts of fish, shellfish, and crustaceans caught from Rapid Creek and Ludmilla Creek.

Based on the outcomes of the investigations and risk assessment, Defence identified further studies and actions required to manage the risks from PFAS contamination leaving RAAF Base Darwin. These studies and actions are outlined in the 2024 PMAP.

#### Revised PFAS Management Area Plan

The following management activities have been completed since the original PMAP was issued in 2019:

- Prepared and delivered remediation of two PFAS source areas: former fire training area 1 and the wrapped stockpile area.
- Completed remediation planning for three more PFAS source areas: current fire training area, former fuel farm 4 and former fuel farm 6.
- Removed PFAS-contaminated infrastructure at the current fire training area.

The following activities are ongoing or planned:

- Supporting NT Health advisories consumption of fish and crustaceans in Rapid Creek and Ludmilla Creek.
- Investigate drainage pathways to reduce PFAS movement in stormwater.
- Control movements of PFAS-contaminated soils.
- Continued investigation of remediation options for soils and groundwater.
- Undertaking remediation at PFAS source areas once remediation plans are completed.

#### Next steps

Over the next 12-18 months, Defence will:

- continue to monitor PFAS in the environment and take action if required. The next round of sampling is scheduled for October 2025
- undertake monitoring to assess the effectiveness of remediation actions
- continue to keep the community informed.

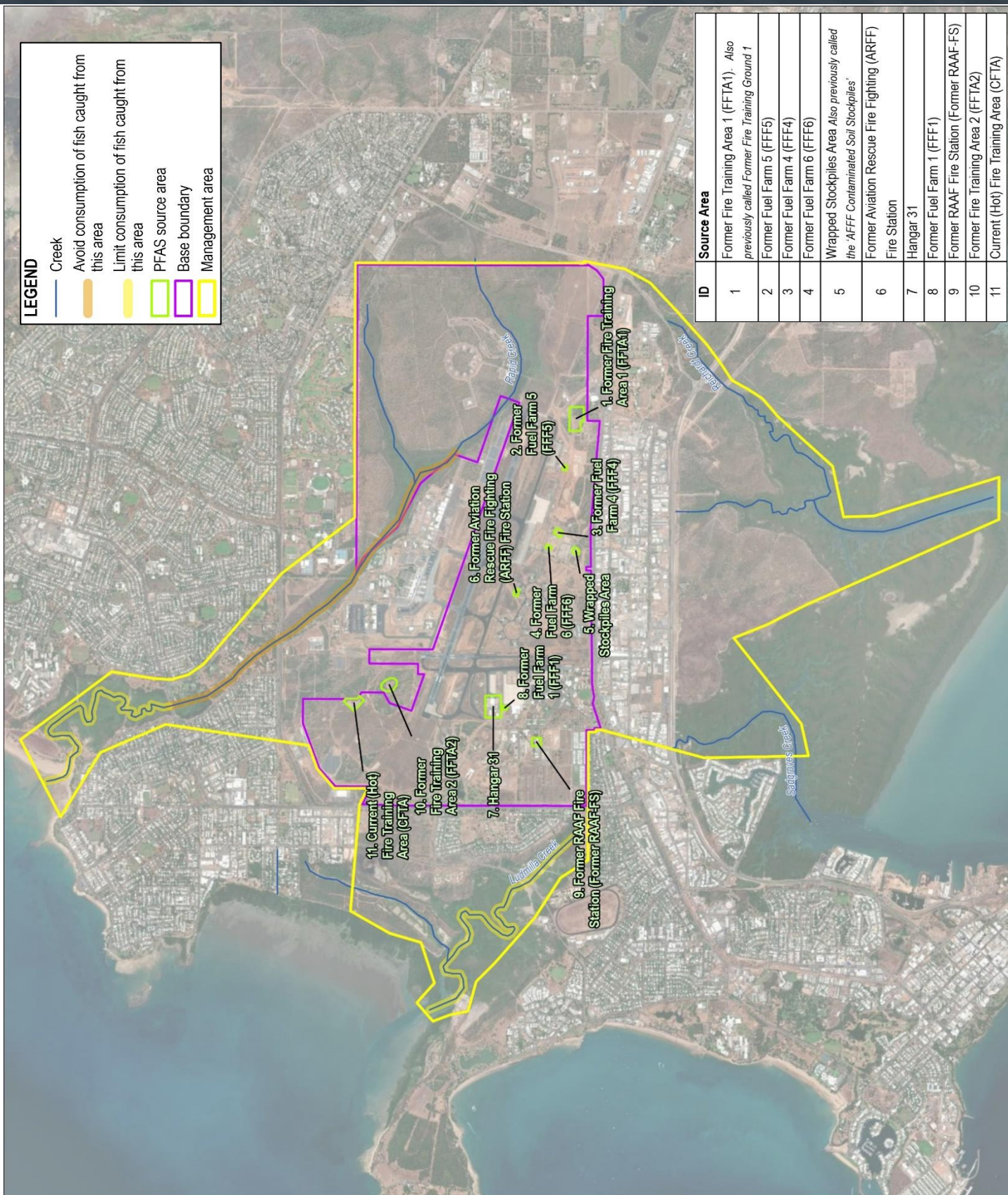
#### For more information

A full copy of the revised PMAP is available on the Defence website at: [www.defence.gov.au/about/locations-property/pfas/pfas-management-sites/raaf-base-darwin](http://www.defence.gov.au/about/locations-property/pfas/pfas-management-sites/raaf-base-darwin)





LEGEND	
	Creek
	Avoid consumption of fish caught from this area
	Limit consumption of fish caught from this area
	PFAS source area
	Base boundary
	Management area



ID	Source Area
1	Former Fire Training Area 1 (FFTA1). Also previously called Former Fire Training Ground 1
2	Former Fuel Farm 5 (FFF5)
3	Former Fuel Farm 4 (FFF4)
4	Former Fuel Farm 6 (FFF6)
5	Wrapped Stockpiles Area Also previously called the 'AFFF Contaminated Soil Stockpiles'
6	Former Aviation Rescue Fire Fighting (ARFF) Fire Station
7	Hangar 31
8	Former Fuel Farm 1 (FFF1)
9	Former RAAF Fire Station (Former RAAF-FS)
10	Former Fire Training Area 2 (FFTA2)
11	Current (Hot) Fire Training Area (CFTA)

## Contact us



1800 333 362



[pfas.enquiry@defence.gov.au](mailto:pfas.enquiry@defence.gov.au)

Scan the QR code to find out more about Defence's PFAS Investigation and Management Program.

