

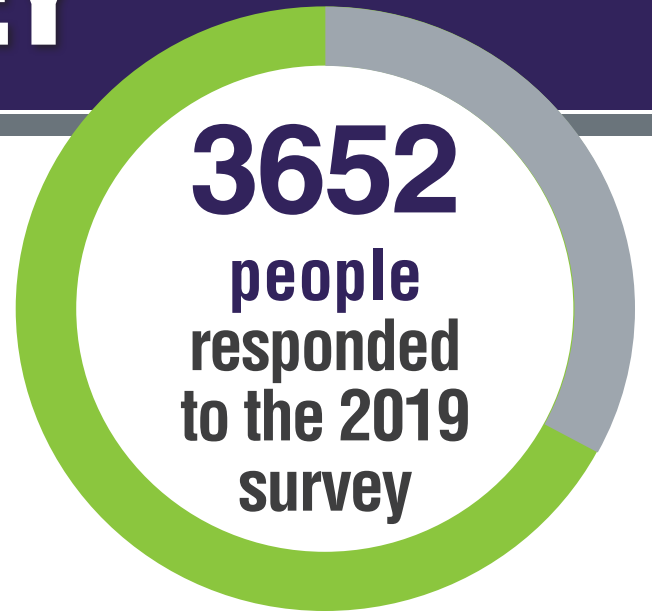
# 2019 ADF FAMILIES SURVEY

## AWARENESS OF ADF TRANSITION

AROUND **23%** of respondents were transitioning or considering transitioning out of the permanent ADF.



AROUND **64%** knew where to find information on transition support.

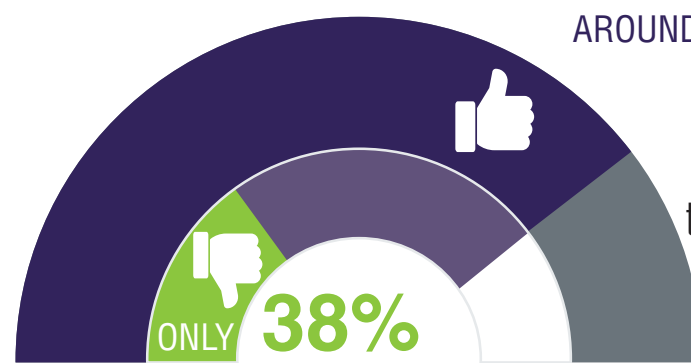


## RELOCATIONS AND HOUSING

AROUND **78%** of respondents relocated at least once between 2015 and 2019.



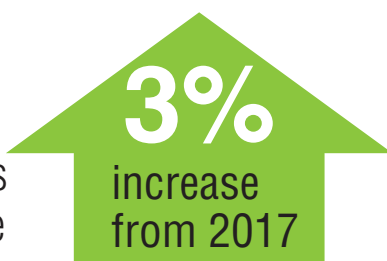
## DEPLOYMENT AND ABSENCES FROM HOME



## PARTNER EMPLOYMENT



AROUND **72%** of civilian partners reported they were working.

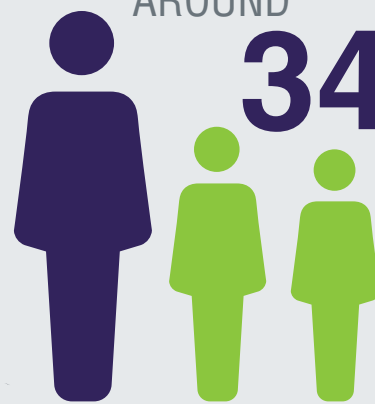


AROUND **24%** of employed civilian partners are health or education professionals.

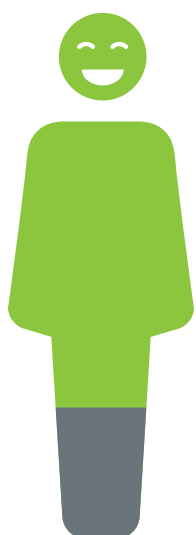


## MEMBER WITH DEPENDANTS (UNACCOMPANIED)

AROUND **34%** of partners reported that they were MWD(U) at some stage between 2015 and 2019.



Employment of both the ADF member and their partner were the main reasons for families deciding to go MWD(U).



AROUND **75%** of civilian partners were in their preferred field of work.



The ADF Families Survey is a joint initiative of Defence Community Organisation and Defence Families of Australia. It aims to provide insights into the impact of ADF conditions of service on family members' satisfaction with service life.

For comprehensive results visit:

[www.defence.gov.au](http://www.defence.gov.au) | [www.dfa.org.au](http://www.dfa.org.au)



Australian Government  
Department of Defence

