

# TOWN MAIN CONNECTED FIRE HYDRANT AND HOSE REELS DATA STRUCTURE

## PHYSICAL PARENTS

Legend:

Physical Relation:

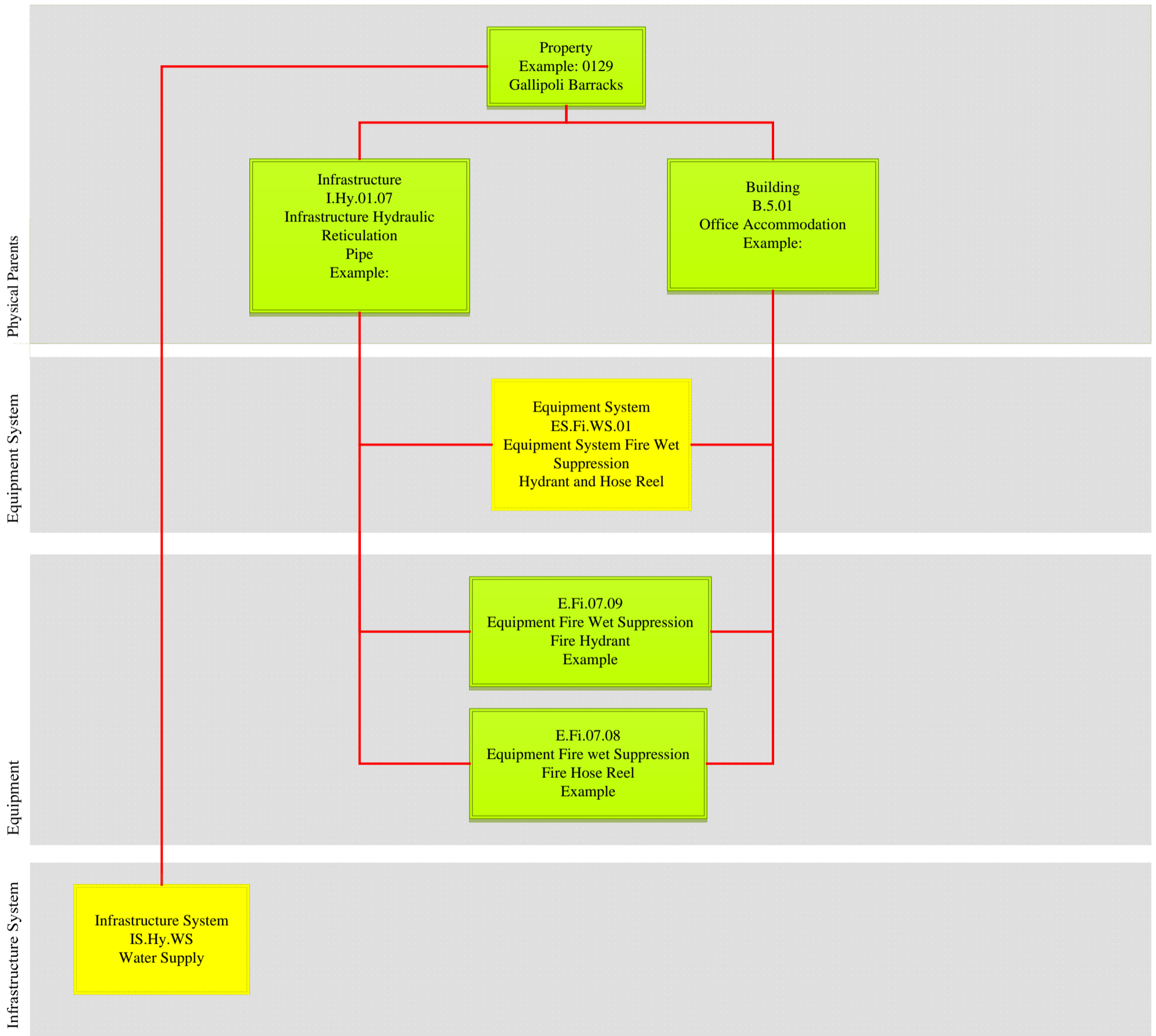


Physical Asset

Functional Relation:



System



Note:

Refers to an overall system used to deliver water to a site. One record for each independent system and/or supply authority responsible for water quality and/or infrastructure.

**Example A:**

1. External supply to on-site tank (external authority responsible for quality to tank),
2. From tank to base (defence responsible for water quality and infrastructure);

**Example B:**

External supply direct across base (external authority responsible for water quality, Defence responsible for infrastructure from point of supply). One record regardless of number of feeds to the same network.

Example C: Separate supply and distribution networks - one record per independent network.

Note:

Where Fire Hydrants and Fire Hose reels are in a building they will be physically linked to the building but where they are outside of a building they will be physically linked to the I.Hy.01.07 - Pipe

# TOWN MAIN CONNECTED FIRE HYDRANT AND HOSE REELS DATA STRUCTURE

## FUNCTIONAL PARENTS

