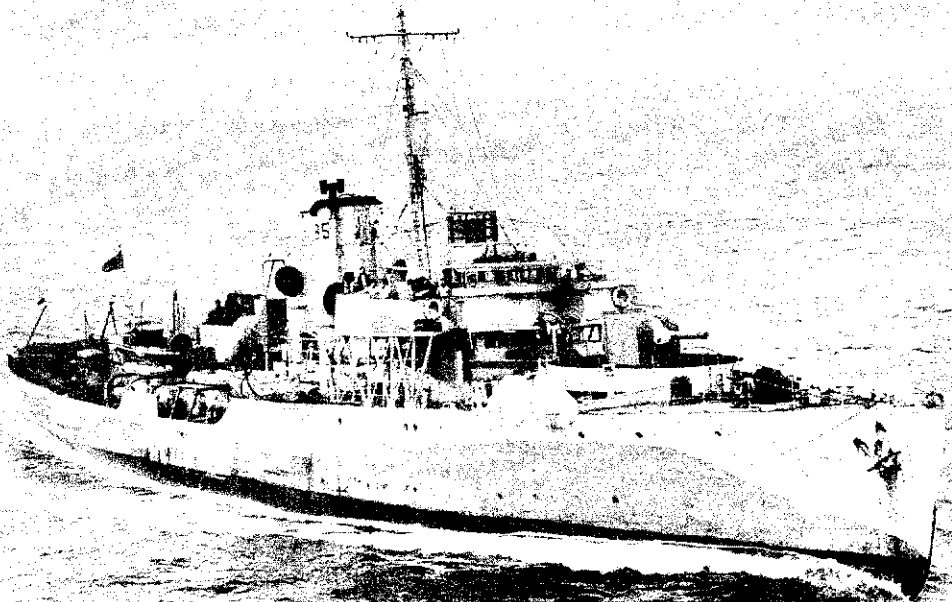


The same pattern anchor
as H.M.A.S SYDNEY II
and also H.M.A.S PERTH
& Believe!

Escort Vessel - Flower Class Corvette.
H.M.S. *Pimpernel*, typical of the corvettes
that provided the majority of the close
escort vessels of the North Atlantic convoys
during the war. *Pimpernel* took part in SC.122's
battle as a member of B5 Group whose
identification mark is painted on her funnel.



SUBM.008.0200