

CHAPTER 91

CLEANING INSTRUCTIONS – HEAVY TANK TRANSPORTER

THIS EQUIPMENT IS NOT CURRENTLY APPROVED FOR DEPLOYMENT

- 91.1** This chapter provides basic and specific cleaning requirements for selected vehicles. Where there is a specific requirement or need to highlight particular problem areas detailed cleaning guides are provided as tables and figures in this chapter.
- 91.2** The heavy tank transporters consists of the following vehicles:
- a MAN H76 41.530 8x8 prime-mover,
 - a 2x8 expanding dolly converter and
 - a Drake 4x8 expanding deck, swing-wing trailer.
- 91.3** Heavy tank transporters (HTT) are complex pieces of machinery. While all contamination and QRM must be removed, the main areas of concern are:
- external areas,
 - cabin,
 - suspension,
 - hydraulics, and
 - tyres (new, old and spares).
- 91.4** All points are not specific to all transporters.



Figure 91–1: Heavy Tank Transporter

SECTION 91-1 MAN H76 41.530 8X8 PRIME MOVER



Figure 91–2: MAN H76 41.530 8x8 Prime Mover

External Areas

91.5 The cleaning instructions for the prime mover's external areas, as illustrated in Figures 91-2 to 91-11, include the points detailed in Table 91-1.



Figure 91–3: Prime Mover Fuel Tanks



Figure 91-4: Prime Mover Main Stowage Bins



Figure 91-5: Prime Mover Water and Wheel Change Tool Box



Figure 91-6: Prime Mover Front and Rear Wheel Anti-splash Fittings



Figure 91-7: Prime Mover Rear View

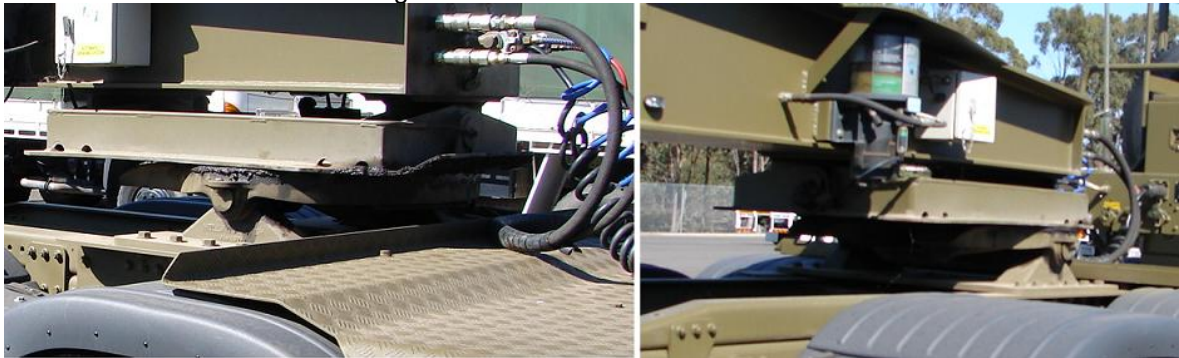


Figure 91-8: Prime Mover Turntable



Figure 91-9: Prime Mover Turntable and Hydraulics



Figure 91-10: Prime Mover Battery Bay



Figure 91-11: Prime Mover Spare Tyre Mount and Winch

Table 91-1: Cleaning Instructions for the Prime Mover's External Areas

<i>Serial</i>	<i>Comments or Tasks</i>	<i>Technical Time (hours)</i>
1	Remove all CES to facilitate cleaning of soil, plant and insect debris.	
2	Individually clean all items of CES. Do not replace in the vehicle until inspection has been completed by AQIS.	
3	The straps on the fuel and air tanks are to be loosened to facilitate cleaning. The fuel tank is to be lowered to allow for cleaning and for inspection by AQIS staff. Leave lowered until AQIS inspection is	

UNCONTROLLED IF PRINTED

91-6

<i>Serial</i>	<i>Comments or Tasks</i>	<i>Technical Time (hours)</i>
	completed (refer Figure 91-3).	
4	Toolboxes/stowage compartments are to be emptied and cleaned. The rubber seals around the doors are to be inspected to ensure all soil, plant and insect matter is removed (refer Figures 91-4 and 91-5).	
5	Clean all rubber seals around the doors.	
6	Flush support bases and tubing underneath stowage areas.	
7	All grease and oil is to be removed to ensure freedom from QRM. Required areas may be re-greased or re-oiled after they have been inspected by AQIS.	
8	The inside of the tank is to be washed with high-pressure water and then treated with chlorinated water and allowed to air dry (refer Figure 91-5).	
9	The water tank is to be sprayed internally with a chlorine solution (400 parts per million) and then allowed to air dry or fill the tank to full and chlorinate the water as above and then drain and air dry. AQIS may require the inclusion of a super chlorinated sample to be sealed inside the tank after inspection to test any residual water.	
10	The tyre anti-splash fitting is to be removed and cleaned to ensure freedom from soil and plant material (refer Figure 91-6).	
11	Degrease the rear end fittings/area and clean with high-pressure water to ensure there is no soil, plant or insect matter (refer Figure 91-7).	
12	The chassis is to be cleaned using flexible nozzle high-pressure water cleaning equipment. Particular attention is to be paid to small apertures which may act as reservoirs for soil, insect, snails and plant material. Additionally, check that no animals are hiding or nesting within the chassis.	
13	All underside hollow members are to be subject to high-pressure water using a flexible nozzle to remove all soil, plant and insect matter.	1.5
14	Degrease the turntable area and clean with high-pressure water to ensure there is no soil, plant or insect matter (refer Figures 91-8 and 91-9).	
15	High-pressure water clean around the turntable fittings using a flexible nozzle as is necessary to get into all areas.	
16	Remove batteries and individually clean. Do not replace until batteries and batter box has been inspected by AQIS (refer Figure 91-10).	
17	Clean battery leads to ensure they are free of QRM.	
18	The battery box support member is to be flushed through using a flexible nozzle until clear water is seen to exit.	
19	Flush support bases and tubing underneath battery box.	
20	The tyre mount is to be cleaned as per "Spare Tyre Mounts" in Section 91-3 (refer Figure 91-11).	1.0
21	Fitted and spare tyres are to be cleaned as per "Tyres (New, Old and Spares)" in Section 91-3.	

Engine – Engine Compartment

91.6 The specific cleaning instructions for Prime Mover's engine and engine compartment include those points detailed in Table 91-2.

Table 91–2: Cleaning Instructions for the Prime Mover's Engine Compartment

<i>Serial</i>	<i>Comments or Tasks</i>	<i>Technical Time (hours)</i>
1	Clean the engine compartment and engine to ensure they are free of dust, built-up dirt and grease, insect and plant material.	
2	Ensure any engine openings/breathers are taped or plugged to stop ingress of water.	
3	Ensure the starter motor and alternator are covered and taped to stop ingress of water.	
4	Do not direct high-pressure water jets at any of the engine openings/breathers, or at any of the electrical/electronic components.	
5	Remove heater assembly and clean heater core to remove all dirt, dust, plant and insect material.	
6	Clean heater/ventilation fan housing to ensure it is free from dirt, dust, plant and insect material.	
7	Remove the air cleaner element and dispose of in accordance with AQIS instructions. Replace the air cleaner element with a new part.	
8	Check all surfaces of engine block including between tappet covers.	
9	Remove air-filter pre-cleaner and clean.	
10	Remove air-filter and clean with air.	
11	Clean inside fan-belt flywheels (harmonic balancer).	
12	The radiator is to be cleaned of all seed and insect matter by high-pressure air and, if necessary, hand-picked clean.	
13	Flush radiator and oil cooler from both sides to verify fin/core cleanliness.	
14	Loosen radiator shroud to let loose debris fall through.	
15	Check either side of radiator for vertical hollow support structures. Flush to verify clean if present.	
16	Check all wiring harnesses for internal cleanliness.	
17	Check under all hydraulic looms for cleanliness.	
18	Removing zip-ties and electrical tape that hold hydraulic hoses together will facilitate the cleaning process.	
19	Ensure all rubber engine mounts are clean.	
20	All water reservoirs to be emptied (excluding radiator).	
21	Check to ensure that sump and engine block is clean.	
22	Check all lights and cavities behind.	

Cabin

91.7 The cleaning instructions for the prime mover's cabin include the points detailed in Table 91-3.

Table 91-3: Cleaning Instructions for the Prime Mover's Cabin

<i>Serial</i>	<i>Comments or Tasks</i>	<i>Technical Time (hours)</i>
1	Remove the rubber floor matting to clean the cabin floor.	
2	Inspect mirror sills and mirrors.	
3	The window and door rubber seals are to be cleaned of all soil, plant and insect matter. Seals on the bonnet area are to be cleaned in a similar fashion.	
4	Door trims are to be removed and cleaned	
5	The seats and the floor mats are to be removed and the cabin floor cleaned.	
6	Special attention is to be made in the cleaning of the under seat area.	
7	Remove joystick control housing and clean inside.	
8	Remove the brake booster assembly and pedal pivot housing and check to ensure the housing is free of insect or plant material.	
9	Remove the clutch pedal pivot housing cover and check to ensure the housing is free of insect or plant material.	
10	Check cleanliness of cabin roof, both inside and out.	
11	The cabin area is to be vacuumed and air-blown clean.	
12	Ventilation ducts are to be unscrewed and air-blown clean.	
13	Remove the front cover from the ventilation fan housing and clean the fan housing. All soil, plant and insect matter are to be removed.	
14	Check all internal light fittings and cavities behind.	

Hydraulics and Compressed Air

- 91.8** The cleaning instructions for the prime mover's hydraulics, as illustrated in Figures 91-12 to 91-14, include the points detailed in Table 91-4.



Figure 91-12: Prime Mover Hydraulic and Air Lines



Figure 91-13: Prime Mover Hydraulic and Air Lines



Figure 91-14: Prime Mover Hydraulic and Air Lines

CAUTION
HYDRAULIC COMPONENTS

Do not use high pressure water or steam to clean the hydraulics or hydraulic control areas unless under the supervision of a qualified technician

Table 91-4: Cleaning Instructions for the Prime Mover's Hydraulics

<i>Serial</i>	<i>Comments or Tasks</i>	<i>Technical Time (hours)</i>
1	Lifting rams are to be fully extended and cleaned.	
2	Extend stabilisers (if fitted), clean the hydraulic cylinder and rod, stabiliser housing and foot assembly.	
3	The hydraulic areas are to be cleaned of all grease and oil to ensure there is no soil, plant or insect matter. Regrease lightly after AQIS inspection to working surface only.	
4	Check under all hydraulic looming for cleanliness	
5	All electrical and hydraulic lines are to be separated and all grease and soil debris cleaned from in between them.	
6	The hydraulic control areas are to be either hand wiped or air-cleaned unless under the supervision of a qualified technician	1.0
7	Items that are likely to snag foliage are to be cleaned of all seed and plant matter.	
8	Stabilising dunnage (Timber) is to be clean and inspected. All timber will require fumigation action. Timber blocking will not be placed back on parent equipment.	

Suspension

91.9 The cleaning instructions for the prime mover's suspension, as illustrated in Figures 91-15 to 91-17, include the points detailed in Table 91-5.



Figure 91-15: Prime Mover's Front Wheels Suspension and rear of Bumper/Scrape Guard



Figure 91-16: Prime Mover's Front Wheels Suspension and Tail-shaft



Figure 91-17: Prime Mover's Rear Wheels Suspension and Differential

Table 91-5: Cleaning Instructions for the Prime Mover's Suspension

<i>Serial</i>	<i>Comments or Tasks</i>	<i>Technical Time (hours)</i>
1	Ensure suspension rocker beam mounts on chassis are clean and free of soil, plant and insect material.	
2	Mud and other debris collect in the spring seat, where the spring is mounted to the axle assembly, and are difficult to remove from the base of the springs. Ensure that this area is cleaned well.	
3	Mud and other debris collect in the inside area on the inner side of the wheel. Ensure that this area is cleaned well	
4	Ensure axles and mounts on chassis are clean and free of soil, plant and insect material.	
5	Ensure the brake housing assemblies, including the brake mounting, are clean and free from mud, dirt, plant and other debris.	
6	Mud and other debris collect in between the tyre and the mud guard. Ensure that this area is cleaned well.	

SECTION 91-2 2X8 EXPANDING DOLLY CONVERTER

External Areas

91.10 The cleaning instructions for the expanding dolly converter, as illustrated in Figures 91-18 to 91-21, include the points detailed in Table 91-6.



Figure 91-18: Expanding Dolly Converter



Figure 91-19: Expanding Dolly Converter Turntable



Figure 91–20: Expanding Dolly Converter Connecting Plate



Figure 91–21: Expanding Dolly Converter Spare Tyre Mounts

Table 91-6: Cleaning Instructions for the Expanding Dolly Converter

<i>Serial</i>	<i>Comments or Tasks</i>	<i>Technical Time (hours)</i>
1	Remove all CES and individually clean.	
2	The chassis is to be cleaned using flexible nozzle high-pressure water cleaning equipment. Particular attention is to be paid to small apertures which may act as reservoirs for soil, insect, snails and plant material. Additionally, check that no animals are hiding or nesting within the chassis.	1.0
3	Frame areas are to be washed through with high-pressure water utilising a flexible nozzle.	
4	Degrease the turntable area and clean with high-pressure water to ensure there is no soil, plant or insect matter (refer Figures 91-19 and 91-20).	
5	High-pressure water clean around the fittings using a flexible nozzle as is necessary to get into all areas.	
6	All underside hollow members are to be subject to high-pressure water using a flexible nozzle to remove all soil, plant and insect matter.	
7	All grease and oil is to be removed to ensure freedom from QRM. Required areas may be re-greased or re-oiled after they have been inspected by AQIS.	
8	The tyre mount is to be cleaned as per "Spare Tyre Mounts" in Section 91-3 (refer Figure 91-21).	
9	Fitted and spare tyres are to be cleaned as per "Tyres (New, Old and Spares)" in Section 91-3.	

Supports and Stands

91.11 The cleaning instructions for the Expanding Dolly Converter Supports and Stands, as illustrated in Figure 91–22, include the points detailed in Table 91–7.



Figure 91–22: Expanding Dolly Converter Support Stand Left Side (Left) and Right Side (Right)

Table 91-7: Cleaning Instructions for the Expanding Dolly Converter Supports and Stands

<i>Serial</i>	<i>Comments or Tasks</i>	<i>Technical Time (hours)</i>
1	Attachment points and frames are to be fully extended prior to cleaning.	
2	Supports are to be cleaned with a high-pressure water cleaner and attention is to be paid to the hollow tube areas.	
3	Stands are to be subject to high-pressure water cleaner, paying attention to the threaded area.	
4	Special attention is to be paid to the foot plates which are to be cleaned with a high-pressure water cleaner.	

Suspension

- 91.12** The cleaning instructions for the Expanding Dolly Converter's suspension, as illustrated in Figures 91-23 and 91-24, include the points detailed in Table 91-8.



Figure 91-23: Expanding Dolly Converter's Rear of Wheels



Figure 91-24: Expanding Dolly Front of Wheels

Table 91-8: Cleaning Instructions for the Expanding Dolly Converter's Suspension

<i>Serial</i>	<i>Comments or Tasks</i>	<i>Technical Time (hours)</i>
1	Ensure suspension rocker beam mounts on chassis are clean and free of soil, plant and insect material.	
2	Mud and other debris collect in the spring seat, where the spring is mounted to the axle assembly, and are difficult to remove from the base of the springs. Ensure that this area is cleaned well.	
3	Mud and other debris collect in the inside area on the inner side of the wheel. Ensure that this area is cleaned well	
4	Ensure axles and mounts on chassis are clean and free of soil, plant and insect material.	
5	Ensure the brake housing assemblies, including the brake mounting, are clean and free from mud, dirt, plant and other debris.	
6	Mud and other debris collect in between the tyre and the mud guard. Ensure that this area is cleaned well.	

91.13 The cleaning instructions for the Expanding Dolly Converter's hydraulics, as illustrated in Figures 91-25 to 91-26, include the points detailed in Table 91-9.



ADF FORCE EXTRACTION CLEANING MANUAL
This equipment is not currently approved for deployment

CAUTION
HYDRAULIC COMPONENTS

Do not use high pressure water or steam to clean the hydraulics or hydraulic control areas unless under the supervision of a qualified technician

Table 91-9: Cleaning Instructions for the Expanding Dolly Converter's Hydraulics

<i>Serial</i>	<i>Comments or Tasks</i>	<i>Technical Time (hours)</i>
1	Lifting rams are to be fully extended and cleaned.	
2	Extend stabilisers (if fitted); clean the hydraulic cylinder and rod, stabiliser housing and foot assembly.	
3	The hydraulic areas are to be cleaned of all grease and oil to ensure there is no soil, plant or insect matter. Regrease lightly after AQIS inspection to working surface only.	
4	Check under all hydraulic looming for cleanliness	
5	All electrical and hydraulic lines are to be separated and all grease and soil debris cleaned from in between them.	
6	The hydraulic control areas are to be either hand wiped or air-cleaned unless under the supervision of a qualified technician (refer Figure 91-26).	1.0
7	Items that are likely to snag foliage are to be cleaned of all seed and plant matter.	
8	Stabilising dunnage (Timber) is to be clean and inspected. All timber will require fumigation action. Timber blocking will not be placed back on parent equipment.	

SECTION 91-3 DRAKE 4X8 EXPANDING DECK, SWING-WING TRAILER

External Areas

91.14 The cleaning instructions for the Drake Trailer, as illustrated in Figures 91-27 to 91-32, include the points detailed in Table 91-10.



Figure 91–27: Drake 4x8 Expanding Deck, Swing-wing Trailer



Figure 91–28: Drake Trailer Extension Arm and Turntable



Figure 91–29: Drake Trailer Extension Arm Underside



Figure 91–30: Drake Trailer Ramp



Figure 91–31: Drake Trailer Ramp Hydraulics



Figure 91–32: Drake Trailer Spare Tyre Mounts

Table 91-10: Cleaning Instructions for the Drake 4x8 Expanding Deck, Swing-wing Trailer

<i>Serial</i>	<i>Comments or Tasks</i>	<i>Technical Time (hours)</i>
1	Remove all CES and individually clean.	
2	The floor, and area under the centre floor plate,(remove as instructed) is to be cleaned using a high-pressure water cleaner.	
3	Frame areas are to be washed through with high-pressure water utilising a flexible nozzle.	
4	Degrease the turntable area and clean with high-pressure water to ensure there is no soil, plant or insect matter (refer Figures 91-28 and 91-29).	
5	High-pressure water clean around the fittings using a flexible nozzle as is necessary to get into all areas.	
6	All underside hollow members are to be subject to high-pressure water using a flexible nozzle to remove all soil, plant and insect matter.	
7	All grease and oil is to be removed to ensure freedom from QRM. Required areas may be re-greased or re-oiled after they have been inspected by AQIS.	
8	Tray body flooring is to have all apertures and tie-down points cleaned with high-pressure water from a front and rear aspect.	
9	Ensure twist lock recesses/housings are cleaned and free of foreign material.	
10	All bins must be emptied and the bin and CES cleaned with a high-pressure water cleaner.	
11	The tyre mount is to be cleaned as per "Spare Tyre Mounts" in Section 91-3 (refer Figure 91-32).	
12	Fitted and spare tyres are to be cleaned as per "Tyres (New, Old and Spares)" in Section 91-3.	

Supports and Stands

91.15 The cleaning instructions for the Drake Swing-wing Trailer's Supports and Stands include the points detailed in Table 91-11.

Table 91-11: Cleaning Instructions for the Drake Swing-wing Trailer's Supports and Stands

<i>Serial</i>	<i>Comments or Tasks</i>	<i>Technical Time (hours)</i>
1	Attachment points and frames are to be fully extended prior to cleaning.	
2	Supports are to be cleaned with a high-pressure water cleaner and attention is to be paid to the hollow tube areas.	
3	Stands are to be removed and subject to high-pressure water cleaner, paying attention to the threaded area.	
4	Special attention is to be paid to the foot plates which are to be cleaned with a high-pressure water cleaner.	

Suspension

91.16 The cleaning instructions for the Drake Swing-wing Trailer's suspension, as illustrated in Figure 91-33, include the points detailed in Table 91-12.



Figure 91–33: Drake Swing-wing Trailer's Suspension

Table 91-12: Cleaning Instructions for the Drake Swing-wing Trailer's Suspension

<i>Serial</i>	<i>Comments or Tasks</i>	<i>Technical Time (hours)</i>
1	Ensure suspension rocker beam mounts on chassis are clean and free of soil, plant and insect material.	
2	Mud and other debris collect in the spring seat, where the spring is mounted to the axle assembly, and are difficult to remove from the base of the springs. Ensure that this area is cleaned well.	
3	Mud and other debris collect in the inside area on the inner side of the wheel. Ensure that this area is cleaned well	
4	Ensure axles and mounts on chassis are clean and free of soil, plant and insect material.	
5	Ensure the brake housing assemblies, including the brake mounting, are clean and free from mud, dirt, plant and other debris.	
6	Mud and other debris collect in between the tyre and the mud guard. Ensure that this area is cleaned well.	

Hydraulics

91.17 The cleaning instructions for the Drake Swing-wing Trailer's hydraulics, as illustrated in Figures 91-34 and 91-35, include the points detailed in Table 91-13.



Figure 91-34: Drake Swing-wing Trailer's Hydraulic Controls

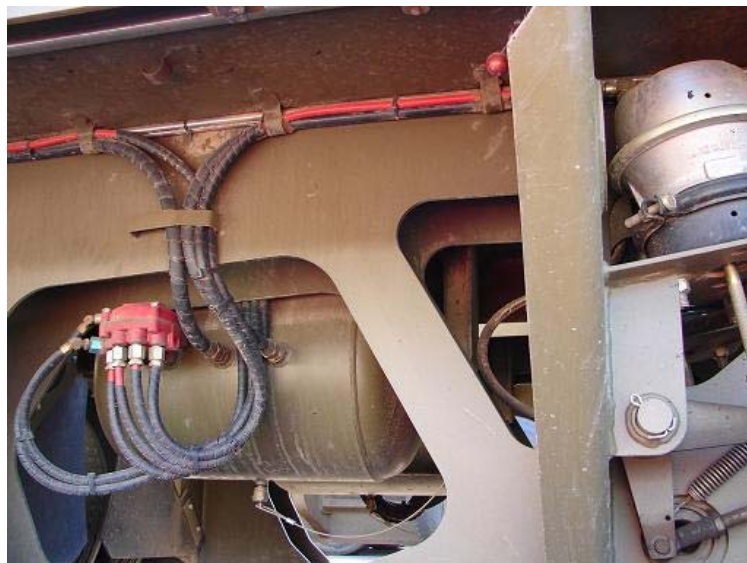


Figure 91-35: Drake Swing-wing Trailer's Hydraulics

CAUTION**HYDRAULIC COMPONENTS**

Do not use high pressure water or steam to clean the hydraulics or hydraulic control areas unless under the supervision of a qualified technician

Table 91-13: Cleaning Instructions for the Drake Swing-wing Trailer's Hydraulics

<i>Serial</i>	<i>Comments or Tasks</i>	<i>Technical Time (hours)</i>
1	Lifting rams are to be fully extended and cleaned.	
2	Extend stabilisers (if fitted), clean the hydraulic cylinder and rod, stabiliser housing and foot assembly.	
3	The hydraulic areas are to be cleaned of all grease and oil to ensure there is no soil, plant or insect matter. Regrease lightly after AQIS inspection to working surface only.	
4	Check under all hydraulic looming for cleanliness	
5	All electrical and hydraulic lines are to be separated and all grease and soil debris cleaned from in between them.	
6	The hydraulic control areas are to be either hand wiped or air-cleaned unless under the supervision of a qualified technician (refer Figure 91-34).	1.0
7	Items that are likely to snag foliage are to be cleaned of all seed and plant matter.	
8	Stabilising dunnage (Timber) is to be clean and inspected. All timber will require fumigation action. Timber blocking will not be placed back on parent equipment.	

SECTION 91-4 COMMON EQUIPMENT

Hydraulic and Electrical Cables

91.18 The cleaning instructions for the Forklift's hydraulic and electrical cables include the point detailed in Table 91-14.

Table 91–14: Cleaning Instructions for the a Forklift's Hydraulic and Electrical Cables

<i>Serial</i>	<i>Comments or Tasks</i>	<i>Technical Time (hours)</i>
1	All electrical and hydraulic lines are to be separated and all grease and soil debris cleaned from in between them.	2.0

Spare Tyre Mounts

91.19 The cleaning instructions for the spare tyre mounts, as illustrated in Figures 91-36 to 91-37, include the points detailed in Table 91-15.



Figure 91–36: Prime Mover Spare Tyre Mount



Figure 91–37: Expanding Dolly Converter Spare Tyre Mounts



Figure 91-38: Drake Trailer Spare Tyre Mounts

Table 91-15: Cleaning Instructions for the Spare Tyre Mounts

<i>Serial</i>	<i>Comments or Tasks</i>	<i>Technical Time (hours)</i>
1	All tools are to be fully removed and extended to facilitate cleaning.	
2	Tyre to be fully removed and to be cleaned as per "Tyres (New, Old and Spares)" below.	
3	Tyre cover (if fitted) to be fully removed and to be washed and scrubbed to remove all QRM.	
4	All externally fitted items of equipment to be removed and both the items and the mounting brackets to be cleaned of all QRM	
5	Frame areas are to be washed with high-pressure water utilising a flexible nozzle.	

Tyres (New, Old and Spares)

91.20 The cleaning instructions for Tyres (New, Old and Spares) include the points detailed in Table 91-16.

Table 91–16: Cleaning Instructions for Tyres (New, Old and Spares)

<i>Serial</i>	<i>Comments or Tasks</i>	<i>Technical Time (hours)</i>
1	All tyres are to be washed and scrubbed to remove all QRM.	
2	Damaged tyres are to be inspected by AQIS, who will determine their suitability for return to Australia. If necessary, damaged tyres (for example, perished, cracked or split) are to be removed and disposed of in accordance with the tyre disposal policy;	
3	Cracked tyres have the risk of containing QRM therefore perished tyres are to be subject to disposal.	
4	All tyres are to be treated with an approved residual insecticide after cleaning	
5	Fitted tyres that are damaged should be replaced with new tyres.	
6	Used and fitted tyres on rims are to be individually verified that the tyres are on rims, inflated with beading sealed and that the tyres are clean, free of water and other quarantine risk material.	
7	Tyres that are not fitted to rims are to be stored in such a manner that water cannot collect inside the tyre. The preferred AQIS solution is that tyres are stored within containers. Tyres not fitted on rims will require fumigation on return to Australia.	
8	AQIS considers a Non-Commercial consignment of tyres to contain a maximum of 8 tyres (inclusive of the wheels on the vehicle) and be imported with an accompanying vehicle. If tyres are to be transported back to Australia in containers or crates, please refer to the AQIS internet site (http://www.daff.gov.au/) ICON (Import Conditions Database) for the commodity “tyres”.	

Tarpaulins

91.21 The cleaning instructions for the tarpaulins include the points detailed in Table 91-17.

Table 91–17: Cleaning Instructions for Tarpaulins

<i>Serial</i>	<i>Comments or Tasks</i>	<i>Technical Time (hours)</i>
1	All tarpaulins are to be given a brush down, brush scrubbing and hose cleaning, paying particular attention to the seam areas and then hung so as not to contact the ground for drying	
2	All ropes and universal dispatch straps are to be extended to their full length and wiped or washed clean of all soil, plant and insect matter Attention to attachment points and fixtures and tension devices is required Personnel are to inspect and remove all twigs, foliage, and so on that has become embedded in the rope fibres	
3	Velcro panels and seams (where fitted) are to be brushed and washed to ensure all seed, plant and soil material is removed	
4	Canvas bags are to be turned inside out and checked for burrs, seeds and insects;	
5	Where fitted, poles, knuckles and pegs are to be subject to a high-pressure water clean to remove all soil, plant and insect matter (ants, spiders and mud wasps are of particular concern)	
6	If tarpaulins have not been used during the entire deployment, then the requirement is for all tarpaulins to be unrolled, brushed and swept clean to ensure no vermin or insect infestation and then subject to an AQIS inspection	

Camouflage Nets

91.22 The cleaning instructions for camouflage nets include the points detailed in Table 91-18.

Table 91–18: Cleaning Instructions for Camouflage Nets

<i>Serial</i>	<i>Comments or Tasks</i>	<i>Technical Time (hours)</i>
1	Removal of grass and debris may be achieved by use of a petrol powered blower/vacuum in the first instance, use of water should be avoided	
2	Heavily soiled camouflage nets may require further scrubbing and a dip in an approved detergent/ disinfectant (one in 20 solution). This has been achieved in the past by using trailers with required additive	
3	Depending on the degree of contamination and diligence in the cleaning process, camouflage nets may require three or more trailer dips to achieve the required AQIS clearance	
4	Drying is to be achieved by hanging the camouflage net so that it does not come into contact with the ground	
5	Nets are to be inspected to ensure that all plant material is removed	
6	Camouflage poles are to be brushed or swept clean; and metal joiners are to be removed cleaned and inspected by AQIS officers	