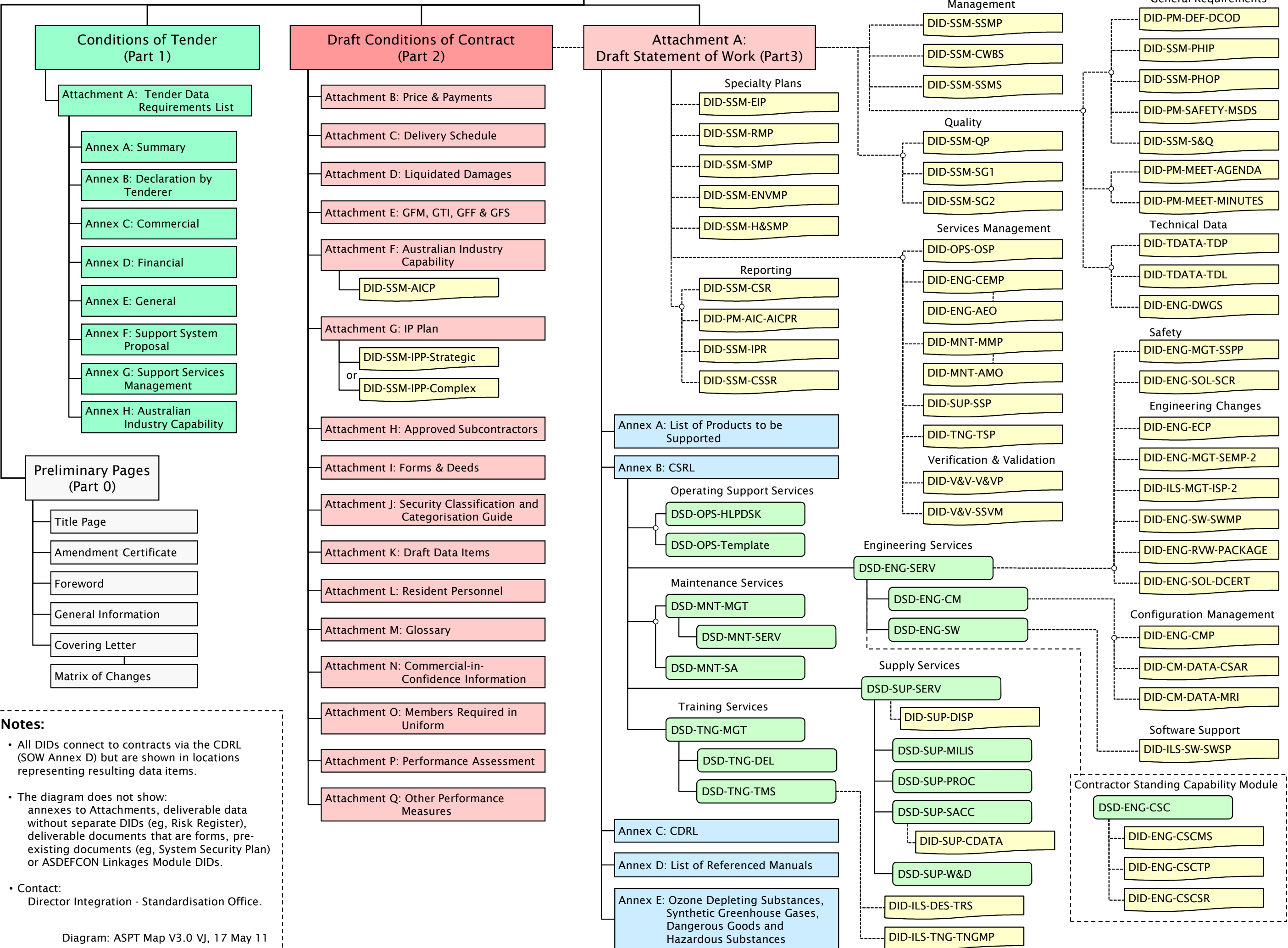


# ASDEFCON (Support) V3.0 Template



**Notes:**

- All DIDs connect to contracts via the CDRL (SOW Annex D) but are shown in locations representing resulting data items.
- The diagram does not show: annexes to Attachments, deliverable data without separate DIDs (eg, Risk Register), deliverable documents that are forms, pre-existing documents (eg, System Security Plan) or ASDEFCON Linkages Module DIDs.
- Contact: Director Integration - Standardisation Office.

Diagram: ASPT Map V3.0 VJ, 17 May 11