

CHAPTER 2

WEARING OF ORDERS, DECORATIONS AND MEDALS

General

2.1 This chapter describes the policies relating to the wearing of honours and awards.

Imperial system of honours and awards

2.2 The Australian system of honours and awards is much more simple than the Imperial system which it replaced. There is only one order in the Australian system (the Order of Australia). Description of those aspects relating to the wearing of Imperial orders is included in [annex A](#) to this chapter.

WEARING OF ORDERS, DECORATIONS AND MEDALS WITH UNIFORM

Wearing neck badges

2.3 Neck badges are worn with ceremonial orders of dress and with Mess Dress.

2.4 With Service dress the badge is worn with the miniature riband under the shirt collar and the top of the badge placed just below the necktie knot.

2.5 With Patrol Blues and Patrol Whites the badge is suspended by the miniature riband which is worn inside the collar so that the top of the badge is positioned 2 cm below the lower edge of the collar.

2.6 With Mess Dress the badge is suspended by the miniature riband so that the top of the badge is positioned 2 cm below the bow tie.

2.7 With open neck shirt or safari suit jacket the badge is suspended from the miniature riband so that the riband lies under the collar and the top of the badge is positioned 2 cm below the highest secured button.

2.8 Neck badges are worn as shown in [figure 2–1](#). If more than one neck badge is worn these are worn as shown in [annex A, figure 2A–2](#).

2.9 Except for neck decorations, official orders, decorations and medals are to be worn by all military members entitled to wear them on the left hand side of the chest. Authorised unofficial medals such as the Royal Humane Society awards are worn on the right hand side of the chest.

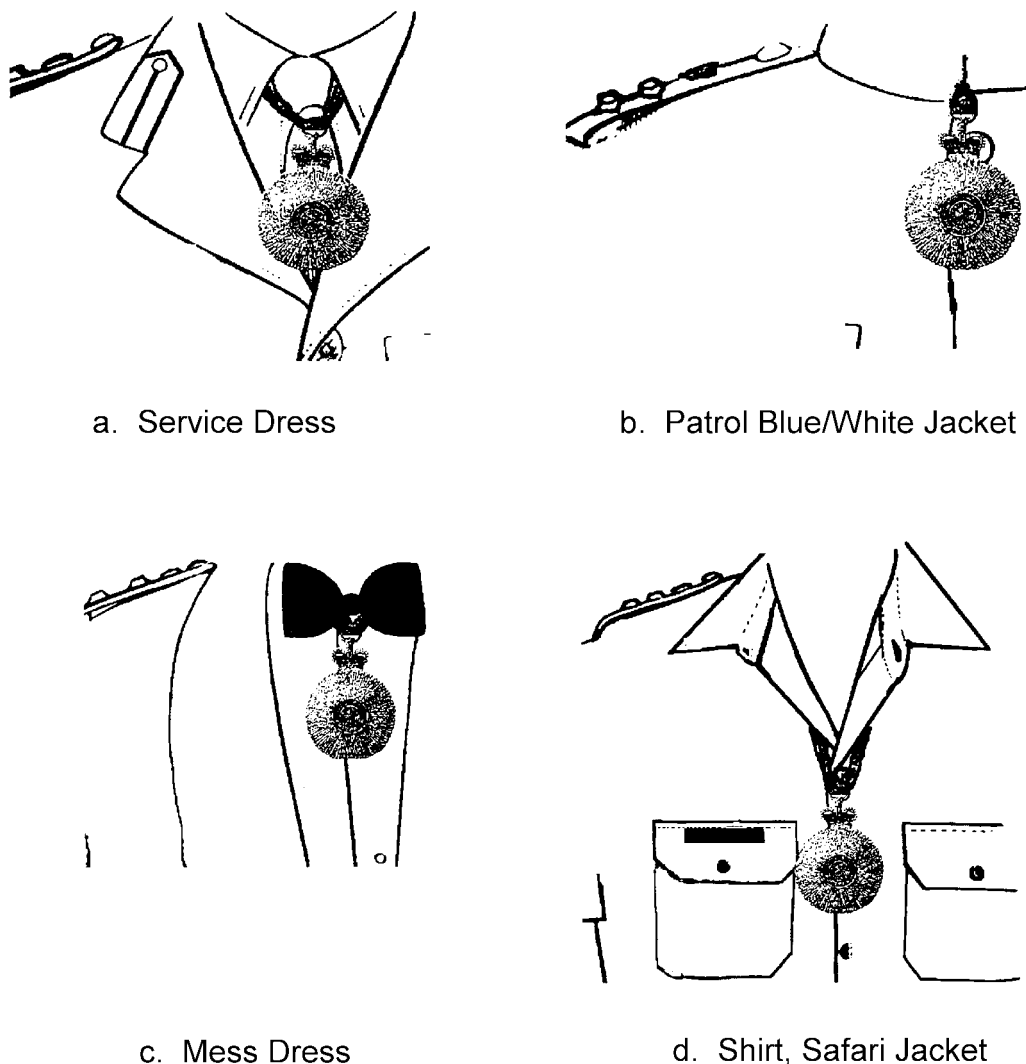


Figure 2-1: Method of wearing neck badges

Wearing of medals

2.10 Medals, suspended from their ribands, are worn on the left breast in one horizontal line, with the highest in the order of precedence nearest the centre of the chest. Medals awarded by a society for bravery in saving human life, when authorised to be worn, are worn on the right breast, similarly to those on the left and on the same horizontal line. All medals are worn obverse outwards, ie with the head of the Sovereign or principal design showing.

2.11 The ribands are to be suspended from a bar which, when worn, is to be concealed. The bar should be of the brooch type, with the pin inserted through the garment and positioned centrally above the left breast pocket without projecting outward beyond the shoulder or inward beyond the opening of the coat, jacket or shirt.

2.12 The medal bar is worn in the same position as the top row of detachable ribbons or, if medal ribbons are sewn on the garment, immediately above the top row of medal ribbons. When medals are worn with garments on which medal ribbons are sewn, care must be taken to ensure the ribbons are completely covered. If necessary, a piece of uniform fabric can be attached to the medal bar.

2.13 A member carrying a guidon, colour or banner, or wearing a drum major's sash is to attach medals to the guidon, colour, banner belt or drum major's sash so that they are positioned over the left breast and above any heraldry displayed on the belt.

2.14 The methods of attaching medals to a bar and court mounting are described in part 5, [chapter 3—‘Maintenance of awards’](#).

Wearing of Campaign/War medals

2.15 Campaign/War medals are worn in the order of the date of the campaign for which they were awarded.

2.16 The order of wearing of the General Service Medal (GSM) (1910–1962), Korea Medal and United Nations Service Medal (Korea) will vary dependent upon the dates of participation in the relevant campaigns.

2.17 The GSM 1962 and the Vietnam Medal are to be worn according to the date of award. Campaign clasps awarded to the MSM, ASM and GSM 1962 are worn in order of the date of award, the first awarded being worn in the lowest position.

2.18 United Nations Service Medals (with the exception of Korea 1950) and the Vietnamese Campaign Medal are classed as foreign awards and as such are worn after all Australian awards and Imperial awards issued as Australian awards. These medals are worn in order of date of award.

2.19 The method of wearing the attached emblem on the Vietnamese Campaign Medal is shown in part 5, chapter 3, [annex B](#).

Miniature medals and ribands

2.20 Miniature medals and ribands are to be worn on the mess jacket so that the lower edge of the medals is 1 cm above the left collar badge. If no collar badge is worn, the medals are to be positioned so that the lower edge is 17 cm below the junction of the collar and the forward edge of the epaulette.

2.21 When miniatures are worn, the senior neck badge or the neck badge most appropriate to the occasion and up to four breast badges or stars may be worn. The miniature of a neck badge should be mounted in order of precedence, in conjunction with other honours and awards. A single miniature should not be worn when wearing the related full size insignia.

2.22 Miniatures are mounted on a single horizontal line and extend over the left breast towards the shoulder but not beyond the shoulder seam, nor beyond the inner edge of the left lapel. The medals do not overlap unless the number worn precludes compliance with this provision. The distance from the top of the riband to the lower edge of the medal is to be 5 cm.

2.23 Miniature medals may be court mounted in the same manner as normal size medals (see part 5, chapter 3, [figure 3–2](#)). Miniature medals do not overlap unless the number worn requires it.

2.24 Miniatures are provided at public expense for the initial issue of awards made under the Australian system. Miniatures are not provided at public expense for Imperial awards or foreign awards.

Bars, clasps and emblems worn on decorations and medals

2.25 **Bars.** Bars are awarded to signify additional awards of the following:

VC, CV, SG, SC, DSC, CSC, NSC, MG, BM, DSM and CSM. Imperial awards for gallantry and distinguished service also have bars awarded to signify additional awards.

2.26 **Clasps.** Clasps are devices worn on medal ribands to signify theatres of operation for service medals, dates of award of medals such as the Champion Shot Medal or additional periods of service following the initial qualifying period for long service awards.

2.27 **Emblems.** Emblems are devices attached to ribands and ribbons. The commendations for gallantry, brave conduct and distinguished service are worn on riband of appropriate colour and worn with medals. In the imperial system the oak leaf emblem is worn on ribands to signify Mention in Dispatches, Queen’s Commendation for Brave Conduct and Queen’s Commendation for Valuable Service in the Air.

2.28 The method of mounting bars, clasps and emblems on ribands is detailed in part 5, [chapter 3](#).

Wearing of ribbons of orders, decorations and medals

2.29 When ribbons are worn apart from the orders, decorations and medals themselves, a ribbon is worn for each medal. The ribbon of the Order of Australia (38 mm wide) is worn for the AC, AO and AM, with a narrower ribbon (32 mm) worn for the OAM. The correct method of mounting Order of Australia ribbon on a ribbon bar is shown in part 5, chapter 3, [annex A](#).

2.30 The vertical width of ribbon bars, and the vertical width of ribbon sewn on garments, is to be between 10–13 mm. This is shown in [figure 2-2](#).



Figure 2-2: Vertical width of ribbon

2.31 The ribbons may be either sewn on, or pinned to the garment by means of a detachable brooch/bar. The ribbons are to be arranged in one or more rows as required, without either gaps or overlapping, in order of precedence as for medals, starting at the inside end of the top or only row. The bottom edge of the first row is to be 3 mm above the top line of the left breast pocket and positioned centrally. When a four ribbon bar is worn, a member may align the inside edge of the bar with the inside edge of the pocket. In this event, badges are to be aligned with the centre of the ribbon bar. The rows are to be 3 mm apart. On the maternity uniform the bottom of the lower row of ribbons is to be 20 cm below the top centre of the shoulder.

2.32 Medal ribbons are to be presented as follows:

- a. **Bottom row.** The bottom row is to be completed first. It is to contain not more than four ribbons (for males and three ribbons for females). If there are fewer than four the ribbon bar is placed centrally over the pocket. If there are more than four a second row is begun.
- b. **Second row.** The second row is to contain four ribbons if eight or more ribbons are worn. Where the second or subsequent row of four ribbons contains a decoration/s which exceeds the width of the lower row, that row is to be reduced to a three ribbon bar. If there are fewer than four ribbons in the second row the ribbon bar is placed centrally over the bottom row.
- c. **Third and succeeding rows.** Any further rows are to be placed centrally between the left and right edges of the lower rows. The rows are not to project under the lapel and are to be placed centrally between the edge of the lapel and the left-hand edge of the lower rows.

2.33 When a new award is made, the recipient is entitled to wear the appropriate ribbon as soon as the award is promulgated, irrespective of the date of the investiture or the date the medal is received.

2.34 Flying badges and the parachute jump instructor badge are worn with medals and ribbons as detailed in part 4, [chapter 4—'Aircrew badges'](#). The infantry combat badge is worn as detailed in part 4, [chapter 8—'Other badges and insignia'](#).

Clasps, emblems and devices worn on ribbons

2.35 A miniature emblem of the VC, CV, SC and BM is worn on the ribbons of those awards. Further awards are indicated by additional miniature emblems worn on the ribbon. Additional awards of SG, SDC, MG, DSM, NSC, CSC and CSM are denoted by a miniature ribbon bar emblem for each of those awards worn on the ribbon. A ribbon bar emblem is worn for each additional award.

2.36 Miniature emblems of the Commendation for Gallantry, Commendation for brave Conduct and Commendation for Distinguished Service are worn on a ribbon of appropriate colour when ribbons are worn. This ribbon is placed in the same order of precedence as for medals.

2.37 Rosettes of appropriate design are worn on the ribbons of DFSM, DLSM, RFD, RFM and National Medal to denote additional qualifying periods of service after the original service for qualification for the medal.

2.38 In the Imperial system a miniature oak leaf device is worn either on the ribbon of a medal representing the campaign for which the award was made or, if a medal is not awarded, the device is worn on a ribbon size piece of material of the same colour as the uniform being worn. Silver rosettes are worn on ribbons of certain Imperial medals to denote clasps or bars to the medals. They are not worn on medal ribands.

2.39 Numeral clasps for United Nations Medals are worn on the ribbon only; they are not worn on the medal riband. The numerical clasps for the Multinational Force and Observers (MFO) medal are worn on both the ribbon and the medal riband.

2.40 The method of mounting emblems on ribbons is detailed in part 5, [chapter 3](#).

Emblems of unit awards

2.41 The wearing of emblems of unit citations is described in part 4, [chapter 9—‘Emblems of awards’](#).

Wearing of unofficial awards

2.42 Authorised unofficial awards are worn on the right side in the same relative position as official awards worn on the left side. When ribbons are worn, the ribbons of authorised unofficial awards are worn on the right side.

Order of St John of Jerusalem—Silver Cross

2.43 When the ribbon of the Order of St John of Jerusalem is worn, either in uniform or in civilian clothes, a small silver Maltese Cross is worn on the ribbon.

Wearing of orders, decorations and medals by next of kin

2.44 A person in the immediate family of a deceased recipient of a decoration or medal may wear the insignia awarded to that member, on occasions specifically designated for military commemoration. The medals or ribbons of the medals are to be worn on the right breast and **only when the person is in civilian clothes**; they are not permitted to be worn on uniform under any circumstances.

WEARING OF ORDERS, DECORATIONS AND MEDALS WITH CIVILIAN CLOTHES

General

2.45 The word ‘Decorations’ on the invitation card is the intimation from the host that the entertainment is an official one and that decorations should be worn.

Wearing decorations with Evening Dress and Dinner Jacket

2.46 When it is desired that decorations be worn with Evening Dress or Dinner Jacket invitations will state either ‘Evening Dress—Decorations’ (for full evening dress) or ‘Dinner Jacket—Decorations’. When ‘Evening Dress—Decorations’ is prescribed those not in possession of full Evening Dress may wear Dinner Jacket, with decorations, etc. With ‘Dinner Jacket—Decorations’, it is permissible to wear either a stiff evening collar or a soft collar.

2.47 The occasions on which the insignia of orders, miniatures of orders, decorations and medals are worn with Evening Dress or Dinner jacket are:

- a. at parties and dinners when any member of the Royal Family is present. Guests may expect to be informed if any such member will be present;
- b. at functions given in embassies or residences of ambassadors and ministers, unless otherwise notified by the ambassador or minister concerned (a decoration of the country concerned should be worn in preference to a British one, and if both are worn, the former should take precedence over the latter);
- c. at evening parties given by or in the presence of a representative of the Sovereign, when within their sphere of jurisdiction;

- d. at official dinners and receptions, including Service dinners, and public dinners where the host intimates that 'Decorations' should be worn; and
- e. on official occasions when the hosts are:
 - (1) Cabinet Ministers;
 - (2) Ex-Cabinet Ministers;
 - (3) Knights of the Order of the Garter;
 - (4) Knights of the Order of the Thistle;
 - (5) Knights of the Order of St Patrick;
 - (6) Great Officers of State and of the Sovereign's Household; or
 - (7) Lord Mayors and Mayors.

2.48 With 'Evening Dress, Decorations' the following may be worn:

- a. broad riband;
- b. up to four stars;
- c. not more than one neck badge (senior neck badge or the most appropriate to the occasion); and
- d. miniature medals.

2.49 With 'Dinner Jacket, Decorations' the following only are worn:

- a. not more than one star;
- b. not more than one neck badge (senior neck badge or the most appropriate to the occasion); and
- c. miniature medals.

2.50 The method of wearing more than one breast star or more than one neck badge is described in [annex A](#).

Wearing decorations with Morning Dress

2.51 Orders, decorations and medals may be worn with Morning Dress on special official public functions, memorial services, etc. In each case the host of the function or service should intimate whether the wearing of decorations is appropriate. With Morning Dress the following may be worn:

- a. up to four Breast Badges or Stars;
- b. not more than one neck badge (senior neck badge or the most appropriate to the occasion); and
- c. full size medals.

Wearing decorations with Lounge Suit

2.52 With Lounge Suit, full size orders, decorations and medals may be worn at appropriate daytime functions. At evening functions for which Lounge Suit is specified the miniatures of orders, decorations and medals may be worn. In addition one neck badge may be worn. It is not customary to wear Breast Badges, or Broad Ribands and Badges with Lounge Suit.

Female members

2.53 Females in civilian dress may wear the orders, decorations and medals to which they are entitled under the same conditions as for men. The manner of wearing the insignia of orders, decorations and medals is the same as for males except that Dames of Orders do not wear neck badges, but wear the badge over the left breast instead.

2.54 Females receive awards in the Order of Australia as medals or neck badges, not mounted on bows. They are to wear these decorations as medals or neck badges with uniform. A kit is available from Government House (Honours Secretariat) to mount awards on bows for wear with civilian dress.

Summary of the requirements for wearing insignia with civilian dress

2.55 [Table 2-1](#) provides a summary of the requirements for wearing insignia with civilian dress.

Dress	Medals	Neck Badges/Bow (note ^(b))	Breast Stars
Day Dress			
Lounge Suit	Full size	Yes	None
Day Dress—Ladies	Full size (note ^(a))	Yes	None
Morning Suit	Full size	Yes	Up to 4 stars
Formal Day Dress—Ladies	Full size (note ^(a))	Yes	Up to 4 stars
Evening Dress			
Lounge Suit	Miniature	Yes	None
Short Dress	Miniature	Yes	None
Dinner Suit (note ^(c))	Miniature	Yes	1 only
Short/Long Dress	Miniature	Yes	1 only
Evening Dress (note ^(d))	Miniature	Yes	Up to 4 stars
Long Dress	Miniature	Yes	Up to 4 stars

Notes

- (a) Ladies may wear miniatures if the material or style of dress makes the wearing of full size medals inappropriate.
- (b) Ladies may wear insignia on a bow rather than as a neck badge.
- (c) Black tie.
- (d) White tie.

Table 2-1: Summary of the requirements for wearing insignia with civilian dress

Positioning of decorations

2.56 Medals, and miniatures are worn on civilian clothing with the top of the riband positioned midway between the top of the shoulder and the jacket breast pocket. Females are to wear the medals, or miniatures, in a similar position, depending on the style of the dress. The positioning of decorations is shown in [figures 2-3](#) and [2-4](#).

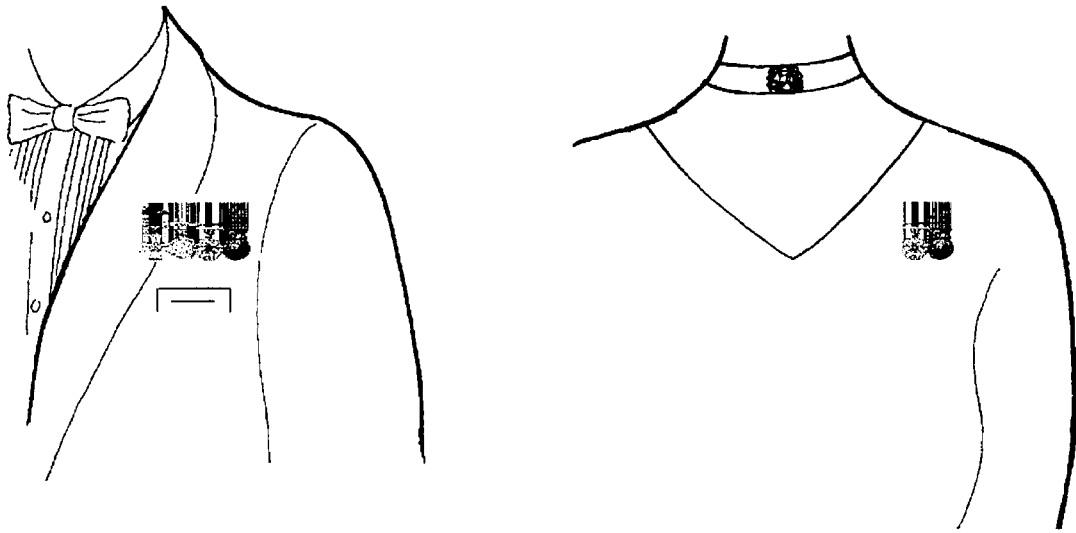


Figure 2-3: Positioning medals on Dinner Suit

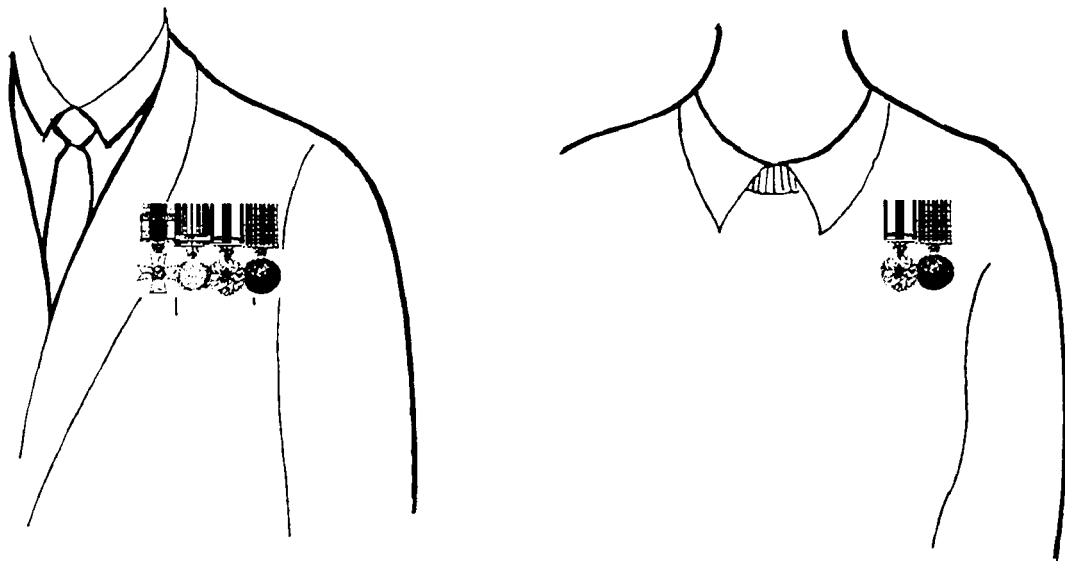


Figure 2-4: Positioning medals on Lounge Suit

Annex:

- A. [Imperial system of honours and awards](#)